

For Research Use Only

# SMARCA2-Specific Recombinant antibody, PBS Only (Capture/Detector)

Catalog Number: 85018-3-PBS



## Basic Information

Catalog Number:

85018-3-PBS

Size:

100ug, Concentration: 1 mg/ml by Nanodrop;

Source:

Rabbit

Isotype:

IgG

Immunogen Catalog Number:

AG25157

GenBank Accession Number:

NM\_003070

GeneID (NCBI):

6595

UNIPROT ID:

P51531

Full Name:

SWI/SNF related, matrix associated, actin dependent regulator of chromatin, subfamily a, member 2

Calculated MW:

181 kDa

Purification Method:

Protein A purification

CloneNo.:

242511H8

## Applications

Tested Applications:

Cytometric bead array, Sandwich ELISA, Indirect ELISA, Sample test

Species Specificity:

human

## Product Information

85018-3-PBS targets SMARCA2-Specific as part of a matched antibody pair:

MP01752-2: 85018-1-PBS capture and 85018-3-PBS detection (validated in Cytometric bead array)

MP01752-3: 85018-3-PBS capture and 85018-1-PBS detection (validated in Sandwich ELISA)

Unconjugated rabbit recombinant monoclonal antibody in PBS only (BSA and azide free) storage buffer at a concentration of 1 mg/mL, ready for conjugation. Created using Proteintech's proprietary in-house recombinant technology. Recombinant production enables unrivalled batch-to-batch consistency, easy scale-up, and future security of supply.

This conjugation ready format makes antibodies ideal for use in many applications including: ELISAs, multiplex assays requiring matched pairs, mass cytometry, and multiplex imaging applications. Antibody use should be optimized by the end user for each application and assay.

## Storage

Storage:

Store at -80°C.

Storage Buffer:

PBS Only

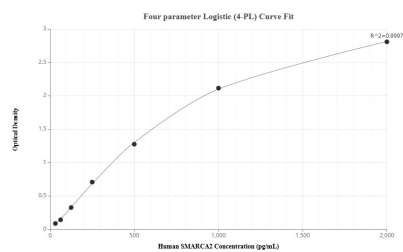
For technical support and original validation data for this product please contact:

T: 1 (888) 4PTGLAB (1-888-478-4522) (toll free in USA), or 1(312) 455-8498 (outside USA)

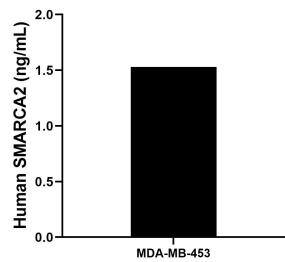
E: [proteintech@ptglab.com](mailto:proteintech@ptglab.com)  
W: [ptglab.com](http://ptglab.com)

This product is exclusively available under Proteintech Group brand and is not available to purchase from any other manufacturer.

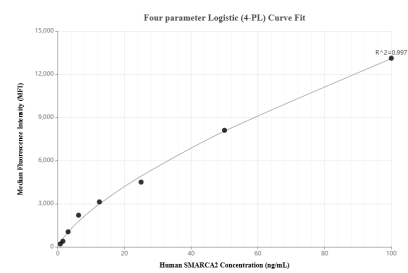
## Selected Validation Data



Sandwich ELISA standard curve of MP01752-3, Human SMARCA2 Recombinant Matched Antibody Pair - PBS only. 85018-3-PBS was coated to a plate as the capture antibody and incubated with serial dilutions of standard Ag25157. 85018-1-PBS was HRP conjugated as the detection antibody. Range: 31.3-2000 pg/mL



The mean SMARCA2 concentration was determined to be 1.53 ng/mL in MDA-MB-453 cell extract based on a 1.5 mg/mL extract load.



Cytometric bead array standard curve of MP01752-2, SMARCA2 Recombinant Matched Antibody Pair, PBS Only. Capture antibody: 85018-1-PBS. Detection antibody: 85018-3-PBS. Standard: Ag25157. Range: 0.781-100 ng/mL