

For Research Use Only

SMARCA2-Specific Recombinant antibody, PBS Only (Capture)

Catalog Number: 85018-5-PBS



Basic Information

Catalog Number:

85018-5-PBS

Size:

100ug, Concentration: 1 mg/ml by Nanodrop;

Source:

Rabbit

Isotype:

IgG

Immunogen Catalog Number:

AG25157

GenBank Accession Number:

NM_003070

GeneID (NCBI):

6595

UNIPROT ID:

P51531

Full Name:

SWI/SNF related, matrix associated, actin dependent regulator of chromatin, subfamily a, member 2

Calculated MW:

181 kDa

Purification Method:

Protein A purification

CloneNo.:

242511H4

Applications

Tested Applications:

Sandwich ELISA, Indirect ELISA, Sample test

Species Specificity:

human

Product Information

85018-5-PBS targets SMARCA2-Specific as part of a matched antibody pair:

MP80010-1: 85018-5-PBS capture and 60774-6-PBS detection (validated in Sandwich ELISA)

Unconjugated rabbit recombinant monoclonal antibody in PBS only (BSA and azide free) storage buffer at a concentration of 1 mg/mL, ready for conjugation. Created using Proteintech's proprietary in-house recombinant technology. Recombinant production enables unrivalled batch-to-batch consistency, easy scale-up, and future security of supply.

This conjugation ready format makes antibodies ideal for use in many applications including: ELISAs, multiplex assays requiring matched pairs, mass cytometry, and multiplex imaging applications. Antibody use should be optimized by the end user for each application and assay.

Storage

Storage:

Store at -80°C.

Storage Buffer:

PBS only, pH7.3

For technical support and original validation data for this product please contact:

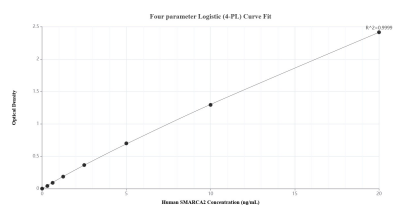
T: 1 (888) 4PTGLAB (1-888-478-4522) (toll free in USA), or 1(312) 455-8498 (outside USA)

E: proteintech@ptglab.com

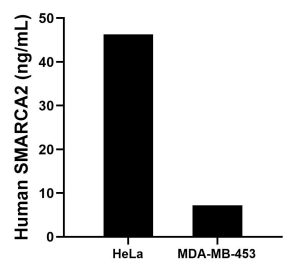
W: ptglab.com

This product is exclusively available under Proteintech Group brand and is not available to purchase from any other manufacturer.

Selected Validation Data



Sandwich ELISA standard curve of MP80010-1, Human SMARCA2 Hybrid Matched Antibody Pair - PBS only. 85018-5-PBS was coated to a plate as the capture antibody and incubated with serial dilutions of standard Ag25157. 60774-6-PBS was HRP conjugated as the detection antibody. Range: 0.313-20 ng/mL.



The mean SMARCA2 concentration was determined to be 46.30 ng/mL in HeLa cell extract based on a 0.90 mg/mL extract load and 7.23 ng/mL in MDA-MB-453 cell extract based on a 1.50 mg/mL extract load.