

For Research Use Only

NKp46/NCR1/CD335 Recombinant antibody, PBS Only (Capture/Detector)

Catalog Number: 85021-1-PBS



Basic Information

Catalog Number: 85021-1-PBS	GenBank Accession Number: GeneID (NCBI): 9437	Purification Method: Protein A purification
Size: 100ug, Concentration: 1 mg/ml by Nanodrop;	UNIPROT ID: O76036-1	CloneNo.: 242549E6
Source: Rabbit	Full Name: natural cytotoxicity triggering receptor 1	
Isotype: IgG	Calculated MW: 34kDa	

Applications

Tested Applications:
Cytometric bead array, Sandwich ELISA, Indirect ELISA, Sample test

Species Specificity:
human

Product Information

85021-1-PBS targets NKp46/NCR1/CD335 as part of a matched antibody pair:

MP01763-1: 85021-2-PBS capture and 85021-1-PBS detection (validated in Cytometric bead array, Sandwich ELISA)

MP01763-2: 85021-1-PBS capture and 85021-3-PBS detection (validated in Cytometric bead array)

Unconjugated rabbit recombinant monoclonal antibody in PBS only (BSA and azide free) storage buffer at a concentration of 1 mg/mL, ready for conjugation. Created using Proteintech's proprietary in-house recombinant technology. Recombinant production enables unrivalled batch-to-batch consistency, easy scale-up, and future security of supply.

This conjugation ready format makes antibodies ideal for use in many applications including: ELISAs, multiplex assays requiring matched pairs, mass cytometry, and multiplex imaging applications. Antibody use should be optimized by the end user for each application and assay.

Storage

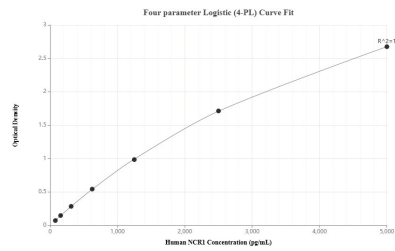
Storage:
Store at -80°C.

Storage Buffer:
PBS Only

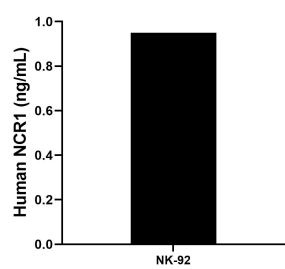
For technical support and original validation data for this product please contact:
T: 1 (888) 4PTGLAB (1-888-478-4522) (toll free in USA), or 1(312) 455-8498 (outside USA)
E: proteintech@ptglab.com
W: ptglab.com

This product is exclusively available under Proteintech Group brand and is not available to purchase from any other manufacturer.

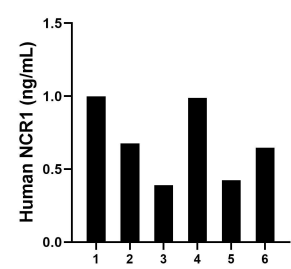
Selected Validation Data



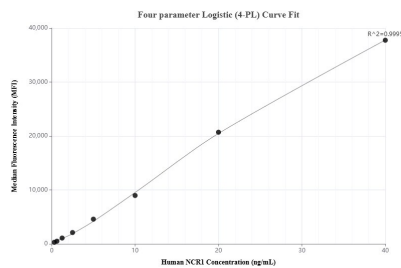
Sandwich ELISA standard curve of MP01763-1, Human NCR1 Recombinant Matched Antibody Pair - PBS only. 85021-2-PBS was coated to a plate as the capture antibody and incubated with serial dilutions of standard Eg1364. 85021-1-PBS was HRP conjugated as the detection antibody. Range: 78.1-5000 pg/mL



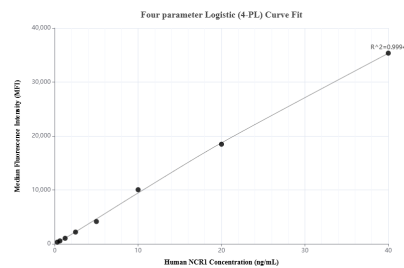
NK-92 cells (1×10^6 cells/mL) were cultured in DMEM supplemented with 10 % fetal bovine serum, 2.5 mM L-glutamine, 100 U/mL penicillin, and 100 µg/mL streptomycin sulfate. The cell culture supernate was assayed for levels of NCR1 and measured 0.95 ng/mL



Serum of six individual healthy human donors was measured. The human NCR1 concentration of detected samples was determined to be 0.69 ng/mL with a range of 0.39 - 1.00 ng/mL



Cytometric bead array standard curve of MP01763-1, NCR1 Recombinant Matched Antibody Pair, PBS Only. Capture antibody: 85021-2-PBS. Detection antibody: 85021-1-PBS. Standard: Eg1364. Range: 0.313-40 ng/mL



Cytometric bead array standard curve of MP01763-2, NCR1 Recombinant Matched Antibody Pair, PBS Only. Capture antibody: 85021-2-PBS. Detection antibody: 85021-3-PBS. Standard: Eg1364. Range: 0.313-40 ng/mL