

For Research Use Only

# NKp46/NCR1/CD335 Recombinant antibody, PBS Only (Capture)

Catalog Number: 85021-2-PBS



## Basic Information

<b>Catalog Number:</b> 85021-2-PBS	<b>GenBank Accession Number:</b> GeneID (NCBI): 9437	<b>Purification Method:</b> Protein A purification
<b>Size:</b> 100ug , Concentration: 1 mg/ml by Nanodrop;	<b>UNIPROT ID:</b> O76036-1	<b>CloneNo.:</b> 242549G12
<b>Source:</b> Rabbit	<b>Full Name:</b> natural cytotoxicity triggering receptor 1	
<b>Isotype:</b> IgG	<b>Calculated MW:</b> 34kDa	

## Applications

**Tested Applications:**  
Cytometric bead array, Sandwich ELISA, Indirect ELISA, Sample test

**Species Specificity:**  
human

## Product Information

85021-2-PBS targets NKp46/NCR1/CD335 as part of a matched antibody pair:

MP01763-1: 85021-2-PBS capture and 85021-1-PBS detection (validated in Cytometric bead array, Sandwich ELISA)

Unconjugated rabbit recombinant monoclonal antibody in PBS only (BSA and azide free) storage buffer at a concentration of 1 mg/mL, ready for conjugation. Created using Proteintech's proprietary in-house recombinant technology. Recombinant production enables unrivalled batch-to-batch consistency, easy scale-up, and future security of supply.

This conjugation ready format makes antibodies ideal for use in many applications including: ELISAs, multiplex assays requiring matched pairs, mass cytometry, and multiplex imaging applications. Antibody use should be optimized by the end user for each application and assay.

## Storage

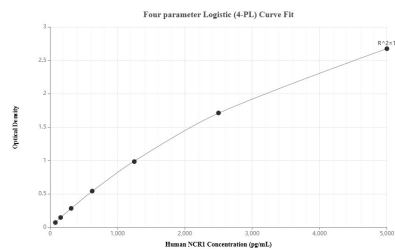
**Storage:**  
Store at -80°C.

**Storage Buffer:**  
PBS Only

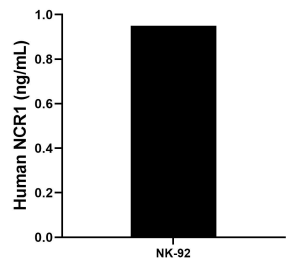
For technical support and original validation data for this product please contact:  
T: 1 (888) 4PTGLAB (1-888-478-4522) (toll free in USA), or 1(312) 455-8498 (outside USA)  
E: [proteintech@ptglab.com](mailto:proteintech@ptglab.com)  
W: [ptglab.com](http://ptglab.com)

This product is exclusively available under Proteintech Group brand and is not available to purchase from any other manufacturer.

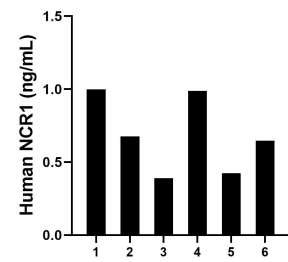
## Selected Validation Data



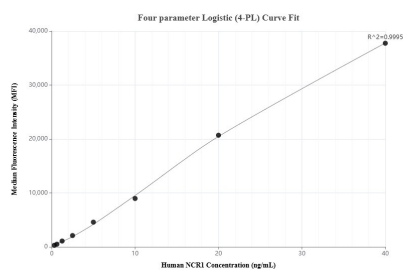
Sandwich ELISA standard curve of MP01763-1, Human NCR1 Recombinant Matched Antibody Pair - PBS only. 85021-2-PBS was coated to a plate as the capture antibody and incubated with serial dilutions of standard Eg1364. 85021-1-PBS was HRP conjugated as the detection antibody. Range: 78.1-5000 pg/mL



NK-92 cells ( $1 \times 10^6$  cells/mL) were cultured in DMEM supplemented with 10 % fetal bovine serum, 2.5 mM L-glutamine, 100 U/mL penicillin, and 100 µg/mL streptomycin sulfate. The cell culture supernate was assayed for levels of NCR1 and measured 0.95 ng/mL



Serum of six individual healthy human donors was measured. The human NCR1 concentration of detected samples was determined to be 0.69 ng/mL with a range of 0.39 - 1.00 ng/mL



Cytometric bead array standard curve of MP01763-1, NCR1 Recombinant Matched Antibody Pair, PBS Only. Capture antibody: 85021-2-PBS. Detection antibody: 85021-1-PBS. Standard: Eg1364. Range: 0.313-40 ng/mL