

For Research Use Only

DOCK11 Recombinant antibody, PBS Only (Capture)

Catalog Number:85022-3-PBS



Basic Information

Catalog Number: 85022-3-PBS	GenBank Accession Number: NM_144658	Purification Method: Protein A purification
Size: 100ug , Concentration: 1 mg/ml by Nanodrop;	GeneID (NCBI): 139818	CloneNo.: 242575H5
Source: Rabbit	UNIPROT ID: Q5JSL3	
Isotype: IgG	Full Name: dedicator of cytokinesis 11	
Immunogen Catalog Number: AG35831	Calculated MW: 238 kDa	
	Observed MW: 238 kDa	

Applications

Tested Applications:
WB, Cytometric bead array, Indirect ELISA

Species Specificity:
human, mouse

Product Information

85022-3-PBS targets DOCK11 as part of a matched antibody pair:

MP01759-2: 85022-3-PBS capture and 85022-1-PBS detection (validated in Cytometric bead array)

Unconjugated rabbit recombinant monoclonal antibody in PBS only (BSA and azide free) storage buffer at a concentration of 1 mg/mL, ready for conjugation. Created using Proteintech's proprietary in-house recombinant technology. Recombinant production enables unrivalled batch-to-batch consistency, easy scale-up, and future security of supply.

This conjugation ready format makes antibodies ideal for use in many applications including: ELISAs, multiplex assays requiring matched pairs, mass cytometry, and multiplex imaging applications. Antibody use should be optimized by the end user for each application and assay.

Background Information

DOCK11(also known as Zizimin2) is a member of CDM (Ced-5, DOCK180, and Myoblast City) family guanine nucleotide exchange factor mainly expressed in immune cells. As a guanine nucleotide exchange factor, DOCK11 activated the rho family GTPase cell division cycle 42 (CDC42), resulting in cytoskeletal reorganization.

Storage

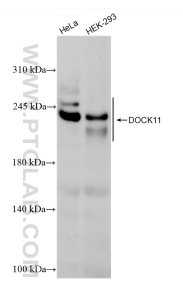
Storage:
Store at -80°C.

Storage Buffer:
PBS only

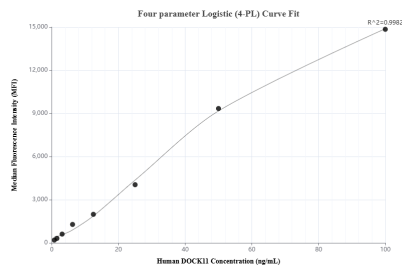
For technical support and original validation data for this product please contact:
T: 1 (888) 4PTGLAB (1-888-478-4522) (toll free in USA), or 1(312) 455-8498 (outside USA)
E: proteintech@ptglab.com
W: ptglab.com

This product is exclusively available under Proteintech Group brand and is not available to purchase from any other manufacturer.

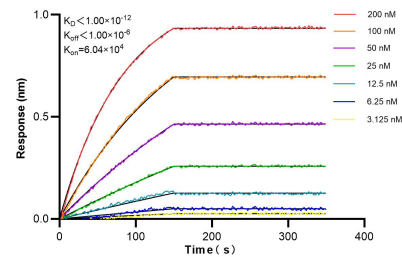
Selected Validation Data



Various lysates were subjected to SDS PAGE followed by western blot with 85022-3-RR (DOCK11 antibody) at dilution of 1:5000 incubated at room temperature for 1.5 hours. This data was developed using the same antibody clone with 85022-3-PBS in a different storage buffer formulation.



Cytometric bead array standard curve of MP01759-2, DOCK11 Recombinant Matched Antibody Pair, PBS Only. Capture antibody: 85022-3-PBS. Detection antibody: 85022-1-PBS. Standard: Ag35831. Range: 0.781-100 ng/mL.



Biolayer interferometry (BLI) kinetic assays of 85022-3-RR against Human DOCK11 were performed. The affinity constant is below 1 pM.