

For Research Use Only

# DOCK11 Recombinant antibody

Catalog Number: 85022-3-RR



## Basic Information

Catalog Number:

85022-3-RR

Size:

100ul , Concentration: 1000 ug/ml by Nanodrop;

Source:

Rabbit

Isotype:

IgG

Immunogen Catalog Number:

AG35831

GenBank Accession Number:

NM\_144658

GeneID (NCBI):

139818

UNIPROT ID:

Q5JSL3

Full Name:

dedicator of cytokinesis 11

Calculated MW:

238 kDa

Observed MW:

238 kDa

Purification Method:

Protein A purification

CloneNo.:

242575H5

Recommended Dilutions:

WB 1:2000-1:10000

## Applications

Tested Applications:

WB, ELISA

Species Specificity:

human, mouse

Positive Controls:

WB : HeLa cells, K-562 cells, RAW 264.7 cells, HEK-293 cells, Jurkat cells

## Background Information

DOCK11(also known as Zizimin2) is a member of CDM (Ced-5, DOCK180, and Myoblast City) family guanine nucleotide exchange factor mainly expressed in immune cells. As a guanine nucleotide exchange factor, DOCK11 activated the rho family GTPase cell division cycle 42 (CDC42), resulting in cytoskeletal reorganization.

## Storage

Storage:

Store at -20°C. Stable for one year after shipment.

Storage Buffer:

PBS with 0.02% sodium azide and 50% glycerol

Aliquoting is unnecessary for -20°C storage

\*\*\* 20ul sizes contain 0.1% BSA

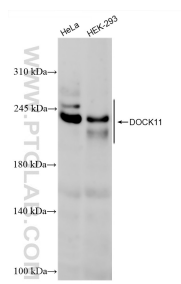
For technical support and original validation data for this product please contact:

T: 1 (888) 4PTGLAB (1-888-478-4522) (toll free in USA), or 1(312) 455-8498 (outside USA)

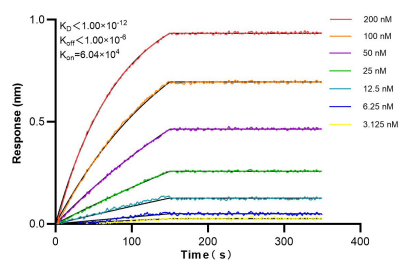
E: [proteintech@ptglab.com](mailto:proteintech@ptglab.com)  
W: [ptglab.com](http://ptglab.com)

This product is exclusively available under Proteintech Group brand and is not available to purchase from any other manufacturer.

## Selected Validation Data



Various lysates were subjected to SDS PAGE followed by western blot with 85022-3-RR (DOCK11 antibody) at dilution of 1:5000 incubated at room temperature for 1.5 hours.



Biolayer interferometry (BLI) kinetic assays of 85022-3-RR against Human DOCK11 were performed. The affinity constant is below 1 pM.