

For Research Use Only

# RECQL Recombinant antibody

Catalog Number: 85024-6-RR



## Basic Information

<b>Catalog Number:</b> 85024-6-RR	<b>GenBank Accession Number:</b> BC001052	<b>Purification Method:</b> Protein A purification
<b>Size:</b> 100ul , Concentration: 1000 ug/ml by Nanodrop;	<b>GeneID (NCBI):</b> 5965	<b>CloneNo.:</b> 242577F1
<b>Source:</b> Rabbit	<b>UNIPROT ID:</b> P46063	<b>Recommended Dilutions:</b> IF/ICC 1:250-1:1000
<b>Isotype:</b> IgG	<b>Full Name:</b> RecQ protein-Like (DNA helicase Q1-like)	
<b>Immunogen Catalog Number:</b> AG6834	<b>Calculated MW:</b> 73 kDa	

## Applications

<b>Tested Applications:</b> IF/ICC, ELISA	<b>Positive Controls:</b> IF/ICC : U-251 cells,
<b>Species Specificity:</b> human	

## Background Information

RECQL, also known as RecQ-like helicase, is a member of the RecQ DNA helicase family. These enzymes play a crucial role in maintaining genomic integrity by participating in various DNA repair processes, including mismatch repair, nucleotide excision repair, and direct repair. It's reported that the low RECQL expression is strongly associated with poor prognosis in breast cancer. RECQL expression may be a useful marker in estimating the prognosis of breast cancer patients. (PMID: 29914420)

## Storage

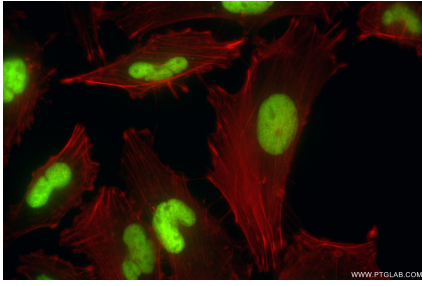
**Storage:**  
Store at -20°C. Stable for one year after shipment.  
**Storage Buffer:**  
PBS with 0.02% sodium azide and 50% glycerol pH 7.3.  
Aliquoting is unnecessary for -20°C storage

\*\*\* 20ul sizes contain 0.1% BSA

For technical support and original validation data for this product please contact:  
T: 1 (888) 4PTGLAB (1-888-478-4522) (toll free in USA), or 1(312) 455-8498 (outside USA)  
E: [proteintech@ptglab.com](mailto:proteintech@ptglab.com)  
W: [ptglab.com](http://ptglab.com)

This product is exclusively available under Proteintech Group brand and is not available to purchase from any other manufacturer.

## Selected Validation Data



Immunofluorescent analysis of (4% PFA) fixed U-251 cells using RECQL antibody (85024-6-RR, Clone: 242577F1 ) at dilution of 1:500 and CoraLite®488-Conjugated Goat Anti-Rabbit IgG(H+L) (SA00013-2), CLS94-Phalloidin (red).