

For Research Use Only

RSPH9 Recombinant antibody, PBS Only

Catalog Number: 85026-4-PBS



Basic Information

Catalog Number:

85026-4-PBS

Size:

100ug, Concentration: 1 mg/ml by Nanodrop;

Source:

Rabbit

Isotype:

IgG

Immunogen Catalog Number:

AG19745

GenBank Accession Number:

BC029519

GeneID (NCBI):

221421

UNIPROT ID:

Q9H1X1

Full Name:

radial spoke head 9 homolog (Chlamydomonas)

Calculated MW:

276 aa, 31 kDa

Observed MW:

33 kDa

Purification Method:

Protein A purification

CloneNo.:

242584D5

Applications

Tested Applications:

WB, Indirect ELISA

Species Specificity:

human, mouse, rat

Background Information

RSPH9 (Radial Spoke Head 9 Homolog) is a protein involved in the structure and function of cilia and flagella. Cilia and flagella are hair-like structures that extend from the surface of many eukaryotic cells and play critical roles in cell motility, sensory perception, and signaling. The RSPH9 protein is a component of the radial spoke, a structure within the axoneme (the core of cilia and flagella) that is essential for the regulation of ciliary and flagellar movement.

Storage

Storage:

Store at -80°C.

Storage Buffer:

PBS only, pH7.3

For technical support and original validation data for this product please contact:

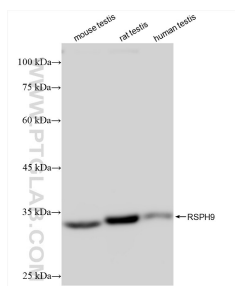
T: 1 (888) 4PTGLAB (1-888-478-4522) (toll free in USA), or 1(312) 455-8498 (outside USA)

E: proteintech@ptglab.com

W: ptglab.com

This product is exclusively available under Proteintech Group brand and is not available to purchase from any other manufacturer.

Selected Validation Data



Various lysates were subjected to SDS PAGE followed by western blot with 85026-4-RR (RSPH9 antibody) at dilution of 1:2000 incubated at room temperature for 1.5 hours. This data was developed using the same antibody clone with 85026-4-PBS in a different storage buffer formulation.