

For Research Use Only

RSPH9 Recombinant antibody

Catalog Number: 85026-4-RR



Basic Information

Catalog Number:

85026-4-RR

Size:

100ul, Concentration: 1000 µg/ml by
Nanodrop;

Source:

Rabbit

Isotype:

IgG

Immunogen Catalog Number:

AG19745

GenBank Accession Number:

BC029519

GeneID (NCBI):

221421

UNIPROT ID:

Q9H1X1

Full Name:

radial spoke head 9 homolog
(Chlamydomonas)

Calculated MW:

276 aa, 31 kDa

Observed MW:

33 kDa

Purification Method:

Protein A purification

CloneNo.:

242584D5

Recommended Dilutions:

WB 1:1000-1:4000

Applications

Tested Applications:

WB, ELISA

Species Specificity:

human, mouse, rat

Positive Controls:

WB : mouse testis tissue, rat testis tissue, human testis
cells

Background Information

RSPH9 (Radial Spoke Head 9 Homolog) is a protein involved in the structure and function of cilia and flagella. Cilia and flagella are hair-like structures that extend from the surface of many eukaryotic cells and play critical roles in cell motility, sensory perception, and signaling. The RSPH9 protein is a component of the radial spoke, a structure within the axoneme (the core of cilia and flagella) that is essential for the regulation of ciliary and flagellar movement.

Storage

Storage:

Store at -20°C. Stable for one year after shipment.

Storage Buffer:

PBS with 0.02% sodium azide and 50% glycerol, pH7.3

Aliquoting is unnecessary for -20°C storage

*** 20ul sizes contain 0.1% BSA

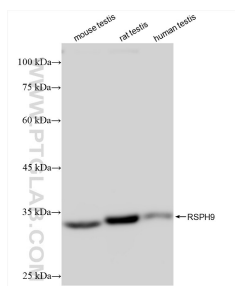
For technical support and original validation data for this product please contact:

T: 1 (888) 4PTGLAB (1-888-478-4522) (toll free
in USA), or 1(312) 455-8498 (outside USA)

E: proteintech@ptglab.com
W: ptglab.com

This product is exclusively available under Proteintech
Group brand and is not available to purchase from any
other manufacturer.

Selected Validation Data



Various lysates were subjected to SDS PAGE followed by western blot with 85026-4-RR (RSPH9 antibody) at dilution of 1:2000 incubated at room temperature for 1.5 hours.