

For Research Use Only

PDLIM1/CLP36 Recombinant antibody, PBS Only

Catalog Number: 85027-5-PBS



Basic Information

| | | |
|--|--|---|
| Catalog Number: 85027-5-PBS | GenBank Accession Number: BC000915 | Purification Method: Protein A purification |
| Size: 100ug, Concentration: 1 mg/ml by Nanodrop; | GeneID (NCBI): 9124 | CloneNo.: 242585C7 |
| Source: Rabbit | UNIPROT ID: O00151 | |
| Isotype: IgG | Full Name: PDZ and LIM domain 1 | |
| Immunogen Catalog Number: AG2274 | Calculated MW: 329 aa, 36 kDa | |
| | Observed MW: 36 kDa | |

Applications

Tested Applications:
WB, IF/ICC, FC (Intra), Indirect ELISA

Species Specificity:
human, mouse, rat

Background Information

PDLIM1, also named as CLIM1, CLP-36, CLP36, hCLIM1 and Elfin, is a member of the actinin-associated LIM protein (ALP)/enigma protein family, plays a role in neurite outgrowth in the peripheral nervous system. It is a cytoskeletal protein that may act as an adapter that brings other proteins (like kinases) to the cytoskeleton. PDLIM1 and PALLD formed a complex in the dorsal root ganglion (DRG) and PDLIM1 and PALLD were colocalized in the neurites and cell bodies of primary DRG neurons. PDLIM1 may interact with PALLD to influence neurite outgrowth during sciatic nerve regeneration. (PMID: 20381583)

Storage

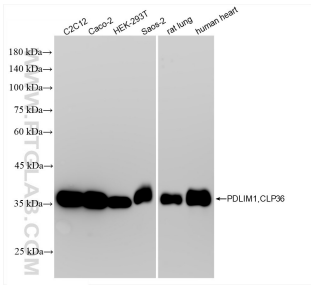
Storage:
Store at -80°C.

Storage Buffer:
PBS only, pH7.3

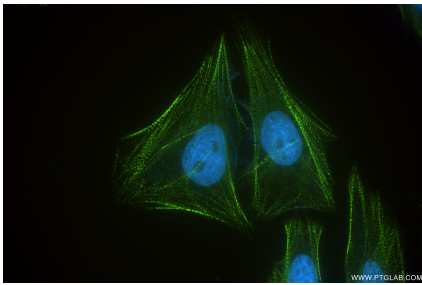
For technical support and original validation data for this product please contact:
T: 1 (888) 4PTGLAB (1-888-478-4522) (toll free in USA), or 1(312) 455-8498 (outside USA)
E: proteintech@ptglab.com
W: ptglab.com

This product is exclusively available under Proteintech Group brand and is not available to purchase from any other manufacturer.

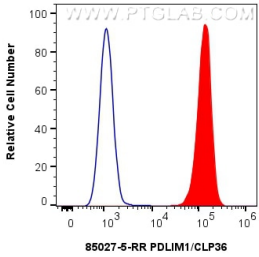
Selected Validation Data



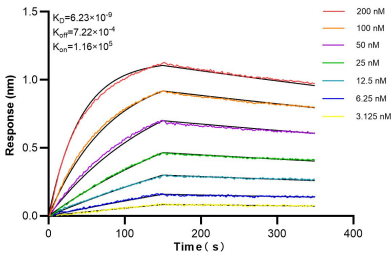
Various lysates were subjected to SDS PAGE followed by western blot with 85027-5-RR (PDLM1,CLP36 antibody) at dilution of 1:10000 incubated at room temperature for 1.5 hours. This data was developed using the same antibody clone with 85027-5-PBS in a different storage buffer formulation.



Immunofluorescent analysis of (4% PFA) fixed HeLa cells using PDLM1/CLP36 antibody (85027-5-RR, Clone: 242585C7) at dilution of 1:500 and CoraLite®488-Conjugated Goat Anti-Rabbit IgG(H+L) (SA00013-2). This data was developed using the same antibody clone with 85027-5-PBS in a different storage buffer formulation.



1x10⁶ HepG2 cells were intracellularly stained with 0.25 ug PDLM1/CLP36 Recombinant antibody (85027-5-RR, Clone:242585C7) and CoraLite®488-Conjugated Goat Anti-Rabbit IgG(H+L) (SA00013-2)(red), or 0.25 ug Rabbit IgG Isotype Control RecAb (98136-1-RR, Clone: 240953C9) (blue). Cells were fixed with 4% PFA and permeabilized with Flow Cytometry Perm Buffer (PF00011-C). This data was developed using the same antibody clone



Biolayer interferometry (BLI) kinetic assays of 85027-5-RR against Human PDLM1/CLP36 were performed. The affinity constant is 6.23 nM.