

For Research Use Only

PDE5A Recombinant antibody

Catalog Number: 85030-1-RR



Basic Information

Catalog Number: 85030-1-RR	GenBank Accession Number: BC126233	Purification Method: Protein A purification
Size: 100ul , Concentration: 1000 µg/ml by Nanodrop;	GeneID (NCBI): 8654	CloneNo.: 242597B10
Source: Rabbit	UNIPROT ID: O76074	Recommended Dilutions: WB 1:2000-1:10000 IF/ICC 1:200-1:800
Isotype: IgG	Full Name: phosphodiesterase 5A, cGMP-specific	
Immunogen Catalog Number: AG18779	Calculated MW: 875 aa, 100 kDa	
	Observed MW: 100 kDa	

Applications

Tested Applications: WB, IF/ICC, ELISA	Positive Controls:
Species Specificity: human, mouse, rat	WB : mouse lung tissue, rat lung tissue IF/ICC : SKOV-3 cells,

Background Information

PDE5A (cGMP-binding cGMP-specific phosphodiesterase) plays a role in signal transduction by regulating the intracellular concentration of cyclic nucleotides. This phosphodiesterase catalyzes the specific hydrolysis of cGMP to 5'-GMP. Through alternative splicing, the PDE5A gene produces three proteins (PDE5A1, PDE5A2, and PDE5A3) that differ in their N termini and range in mass from 89 to 105 kDa. (PMID: 25704994; 21215707). A second 70 kDa band was consistently observed in heart tissue that either reflected a splice variant or proteolytic fragment of PDE5A. (PMID: 15576651).

Storage

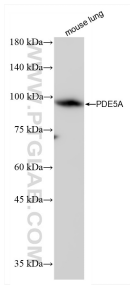
Storage:
Store at -20°C. Stable for one year after shipment.
Storage Buffer:
PBS with 0.02% sodium azide and 50% glycerol pH 7.3.
Aliquoting is unnecessary for -20°C storage

*** 20ul sizes contain 0.1% BSA

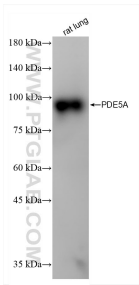
For technical support and original validation data for this product please contact:
T: 1 (888) 4PTGLAB (1-888-478-4522) (toll free in USA), or 1(312) 455-8498 (outside USA)
E: proteintech@ptglab.com
W: ptglab.com

This product is exclusively available under Proteintech Group brand and is not available to purchase from any other manufacturer.

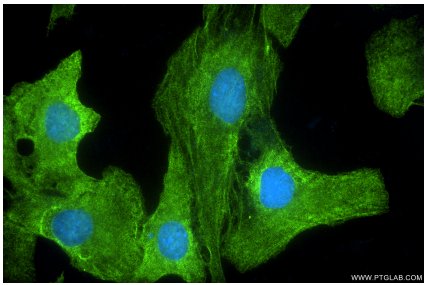
Selected Validation Data



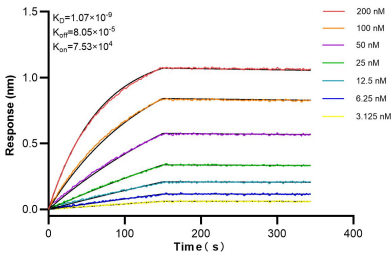
mouse lung tissue were subjected to SDS PAGE followed by western blot with 85030-1-RR (PDE5A antibody) at dilution of 1:5000 incubated at room temperature for 1.5 hours.



rat lung tissue were subjected to SDS PAGE followed by western blot with 85030-1-RR (PDE5A antibody) at dilution of 1:5000 incubated at room temperature for 1.5 hours.



Immunofluorescent analysis of (4% PFA) fixed SKOV-3 cells using PDE5A antibody (85030-1-RR, Clone: 242597B10) at dilution of 1:400 and CoraLite®488-Conjugated Goat Anti-Rabbit IgG(H+L) (SA00013-2).



Biolayer interferometry (BLI) kinetic assays of 85030-1-RR against Human PDE5A were performed. The affinity constant is 1.07 nM.