

For Research Use Only

# C1qC Recombinant antibody

Catalog Number: 85031-5-RR



## Basic Information

Catalog Number:

85031-5-RR

Size:

100ul, Concentration: 1000 µg/ml by  
Nanodrop;

Source:

Rabbit

Isotype:

IgG

Immunogen Catalog Number:

AG10400

GenBank Accession Number:

BC009016

GeneID (NCBI):

714

UNIPROT ID:

P02747

Full Name:

complement component 1, q  
subcomponent, C chain

Calculated MW:

245 aa, 26 kDa

Observed MW:

26 kDa

Purification Method:

Protein A purification

CloneNo.:

242624B1

Recommended Dilutions:

WB 1:5000-1:50000

## Applications

Tested Applications:

WB, ELISA

Species Specificity:

human

Positive Controls:

WB : human plasma,

## Background Information

The first component of complement, C1, is a calcium-dependent complex of the 3 subcomponents C1q, C1r, and C1s. C1q is composed of 18 polypeptide chains: six A-chains, six B-chains, and six C-chains. Each chain contains a collagen-like region located near the N terminus and a C-terminal globular region. Deficiency of C1q has been associated with lupus erythematosus and glomerulonephritis. This antibody is raised against C1qC which is the C-chain polypeptide of human complement subcomponent C1q.

## Storage

Storage:

Store at -20°C. Stable for one year after shipment.

Storage Buffer:

PBS with 0.02% sodium azide and 50% glycerol pH 7.3.

Aliquoting is unnecessary for -20°C storage

\*\*\* 20ul sizes contain 0.1% BSA

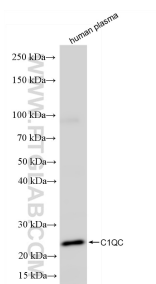
For technical support and original validation data for this product please contact:

T: 1 (888) 4PTGLAB (1-888-478-4522) (toll free  
in USA), or 1(312) 455-8498 (outside USA)

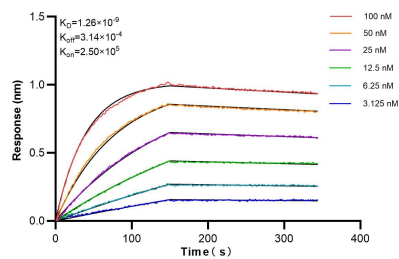
E: proteintech@ptglab.com  
W: ptglab.com

This product is exclusively available under Proteintech Group brand and is not available to purchase from any other manufacturer.

## Selected Validation Data



human plasma was subjected to SDS PAGE followed by western blot with 85031-5-RR (C1QC antibody) at dilution of 1:10000 incubated at room temperature for 1.5 hours.



Biolayer interferometry (BLI) kinetic assays of 85031-5-RR against Human C1qC were performed. The affinity constant is 1.26 nM.