

For Research Use Only

RFK Recombinant monoclonal antibody

Catalog Number: 85032-2-RR

Featured Product



Basic Information

Catalog Number:

85032-2-RR

Size:

100ul, Concentration: 1000 µg/ml by

Nanodrop;

Source:

Rabbit

Isotype:

IgG

Immunogen Catalog Number:

AG8591

GenBank Accession Number:

BC007069

GeneID (NCBI):

55312

UNIPROT ID:

Q969G6

Full Name:

riboflavin kinase

Calculated MW:

162 aa, 18 kDa

Purification Method:

Protein A purification

CloneNo.:

242628A4

Recommended Dilutions:

WB: 1:2000-1:10000

Applications

Tested Applications:

WB, ELISA

Species Specificity:

human

Positive Controls:

WB : HeLa cells, MCF-7 cells, HEK-293 cells, U-87 MG cells

Background Information

Riboflavin kinase (RFK) is an essential enzyme that catalyzes the phosphorylation of riboflavin (vitamin B2) to form flavin mononucleotide (FMN), an obligatory step in vitamin B2 utilization and flavin cofactor synthesis (PMID:12623014). RFK is rate-limiting in the synthesis of FAD, an essential prosthetic group of NADPH oxidase.

Storage

Storage:

Store at -20°C. Stable for one year after shipment.

Storage Buffer:

PBS with 0.02% sodium azide and 50% glycerol, pH7.3

Aliquoting is unnecessary for -20°C storage

*** 20ul sizes contain 0.1% BSA

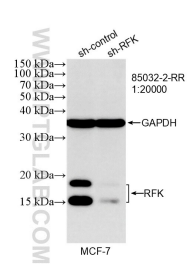
For technical support and original validation data for this product please contact:

T: 1 (888) 4PTGLAB (1-888-478-4522) (toll free in USA), or 1(312) 455-8498 (outside USA)

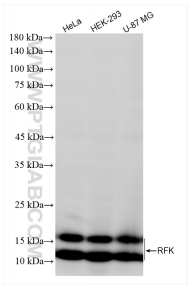
E: proteintech@ptglab.com
W: ptglab.com

This product is exclusively available under Proteintech Group brand and is not available to purchase from any other manufacturer.

Selected Validation Data



WB result of RFK antibody (85032-2-RR; 1:20000; incubated at room temperature for 1.5 hours) with sh-Control and sh-RFK transfected MCF-7 cells.



Various lysates were subjected to SDS PAGE followed by western blot with 85032-2-RR (RFK antibody) at dilution of 1:5000 incubated at room temperature for 1.5 hours.