

For Research Use Only

Rat Fstl1 Recombinant antibody, PBS Only

Catalog Number: 85034-4-PBS



Basic Information

Catalog Number:

85034-4-PBS

Size:

100ug, Concentration: 1 mg/ml by Nanodrop;

Source:

Rabbit

Isotype:

IgG

GenBank Accession Number:

NM_024369.2

GeneID (NCBI):

79210

UNIPROT ID:

Q62632

Full Name:

folliculin-like 1

Calculated MW:

35 kDa

Observed MW:

35-40 kDa

Purification Method:

Protein A purification

CloneNo.:

242633E4

Applications

Tested Applications:

WB, Indirect ELISA

Species Specificity:

rat

Background Information

Follistatin-like protein 1 (FSTL1) is a secreted glycoprotein predominantly produced by mesenchymal cells. It is highly expressed during tissue fibrosis and plays a significant role in various pathological conditions, including inflammation, fibrosis, and immune regulation. It functions as a matricellular protein, interacting with extracellular matrix components and modulating cell-matrix interactions. FSTL1 is involved in multiple biological processes, such as cell proliferation, apoptosis, metabolism, differentiation, and immune response.

Storage

Storage:

Store at -80°C.

Storage Buffer:

PBS Only

For technical support and original validation data for this product please contact:

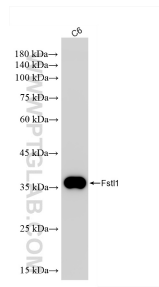
T: 1 (888) 4PTGLAB (1-888-478-4522) (toll free in USA), or 1(312) 455-8498 (outside USA)

E: proteintech@ptglab.com

W: ptglab.com

This product is exclusively available under Proteintech Group brand and is not available to purchase from any other manufacturer.

Selected Validation Data



C6 cells were subjected to SDS PAGE followed by western blot with 85034-4-RR (Fstl1 antibody) at dilution of 1:3000 incubated at room temperature for 1.5 hours. This data was developed using the same antibody clone with 85034-4-PBS in a different storage buffer formulation.