

For Research Use Only

# SEC22B Recombinant antibody, PBS Only

Catalog Number: 85037-5-PBS



## Basic Information

**Catalog Number:**

85037-5-PBS

**Size:**

100ug , Concentration: 1 mg/ml by Nanodrop;

**Source:**

Rabbit

**Isotype:**

IgG

**Immunogen Catalog Number:**

AG12981

**GenBank Accession Number:**

BC001364

**GeneID (NCBI):**

9554

**UNIPROT ID:**

O75396

**Full Name:**

SEC22 vesicle trafficking protein homolog B (S. cerevisiae)

**Calculated MW:**

25 kDa

**Observed MW:**

24 kDa

**Purification Method:**

Protein A purification

**CloneNo.:**

242659B3

## Applications

**Tested Applications:**

WB, FC (Intra), Indirect ELISA

**Species Specificity:**

human, mouse, rat, hamster

## Background Information

Soluble N-ethylmaleimide-sensitive factor (NSF) attachment protein receptor (SNARE) proteins are critical components of the membrane fusion machinery (PMID: 20163564). SEC22B is a SNARE involved in endoplasmic reticulum (ER)/Golgi membrane trafficking. SEC22B localizes to the ER-Golgi intermediate compartment (ERGIC) and has been identified as a regulator of antigen crosspresentation (PMID: 22153078).

## Storage

**Storage:**

Store at -80°C.

**Storage Buffer:**

PBS only, pH7.3

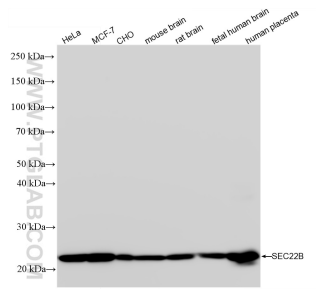
For technical support and original validation data for this product please contact:

T: 1 (888) 4PTGLAB (1-888-478-4522) (toll free in USA), or 1(312) 455-8498 (outside USA)

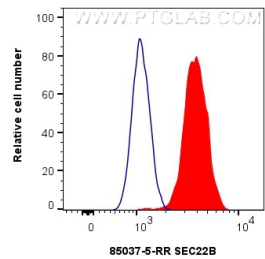
E: [proteintech@ptglab.com](mailto:proteintech@ptglab.com)  
W: [ptglab.com](http://ptglab.com)

This product is exclusively available under Proteintech Group brand and is not available to purchase from any other manufacturer.

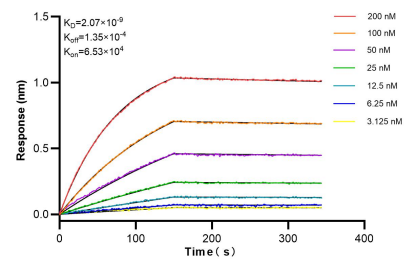
Selected Validation Data



Various lysates were subjected to SDS PAGE followed by western blot with 85037-5-RR (SEC22B antibody) at dilution of 1:10000 incubated at room temperature for 1.5 hours. This data was developed using the same antibody clone with 85037-5-PBS in a different storage buffer formulation.



1x10<sup>6</sup> SH-SY5Y cells were intracellularly stained with 0.25 ug SEC22B Recombinant antibody (85037-5-RR, Clone:242659B3) and CoraLite®488-Conjugated Goat Anti-Rabbit IgG(H+L) (SA00013-2)(red), or 0.25 ug Rabbit IgG Isotype Control RecAb (98136-1-RR, Clone: 240953C9) (blue). Cells were fixed with 4% PFA and permeabilized with Flow Cytometry Perm Buffer (PF00011-C). This data was developed using the same antibody clone with 85037-5-PBS in a



Biolayer interferometry (BLI) kinetic assays of 85037-5-RR against Human SEC22B were performed. The affinity constant is 2.07 nM.