

For Research Use Only

SEC22B Recombinant antibody

Catalog Number: 85037-5-RR



Basic Information

Catalog Number: 85037-5-RR	GenBank Accession Number: BC001364	Purification Method: Protein A purification
Size: 100ul , Concentration: 1000 ug/ml by Nanodrop;	GeneID (NCBI): 9554	CloneNo.: 242659B3
Source: Rabbit	UNIPROT ID: O75396	Recommended Dilutions: WB 1:5000-1:50000
Isotype: IgG	Full Name: SEC22 vesicle trafficking protein homolog B (S. cerevisiae)	
Immunogen Catalog Number: AG12981	Calculated MW: 25 kDa	
	Observed MW: 24 kDa	

Applications

Tested Applications: WB, FC (Intra), ELISA	Positive Controls: WB : HeLa cells, MCF-7 cells, CHO cells, mouse brain tissue, rat brain tissue, fetal human brain tissue, human placenta tissue
Species Specificity: human, mouse, rat, hamster	

Background Information

Soluble N-ethylmaleimide-sensitive factor (NSF) attachment protein receptor (SNARE) proteins are critical components of the membrane fusion machinery (PMID: 20163564). SEC22B is a SNARE involved in endoplasmic reticulum (ER)/Golgi membrane trafficking. SEC22B localizes to the ER-Golgi intermediate compartment (ERGIC) and has been identified as a regulator of antigen crosspresentation (PMID: 22153078).

Storage

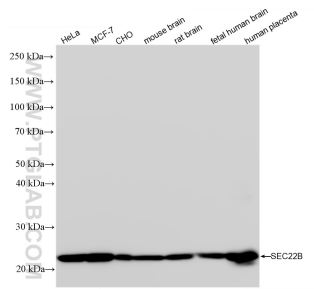
Storage:
Store at -20°C. Stable for one year after shipment.
Storage Buffer:
PBS with 0.02% sodium azide and 50% glycerol, pH7.3
Aliquoting is unnecessary for -20°C storage

*** 20ul sizes contain 0.1% BSA

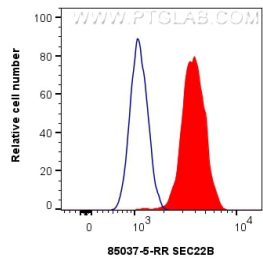
For technical support and original validation data for this product please contact:
T: 1 (888) 4PTGLAB (1-888-478-4522) (toll free in USA), or 1(312) 455-8498 (outside USA)
E: proteintech@ptglab.com
W: ptglab.com

This product is exclusively available under Proteintech Group brand and is not available to purchase from any other manufacturer.

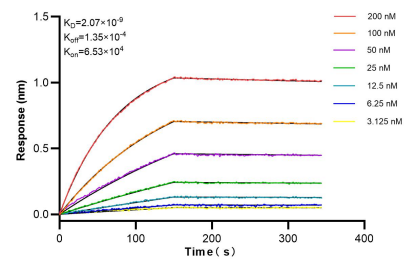
Selected Validation Data



Various lysates were subjected to SDS PAGE followed by western blot with 85037-5-RR (SEC22B antibody) at dilution of 1:10000 incubated at room temperature for 1.5 hours.



1x10⁶ SH-SY5Y cells were intracellularly stained with 0.25 ug SEC22B Recombinant antibody (85037-5-RR, Clone:242659B3) and CoraLite®488-Conjugated Goat Anti-Rabbit IgG(H+L) (SA00013-2) (red), or 0.25 ug Rabbit IgG Isotype Control RecAb (98136-1-RR, Clone: 240953C9) (blue). Cells were fixed with 4% PFA and permeabilized with Flow Cytometry Perm Buffer (PF00011-C).



Biolayer interferometry (BLI) kinetic assays of 85037-5-RR against Human SEC22B were performed. The affinity constant is 2.07 nM.