

For Research Use Only

# NME1 Recombinant antibody

Catalog Number: 85038-7-RR



## Basic Information

Catalog Number:

85038-7-RR

Size:

100ul , Concentration: 1000 ug/ml by Nanodrop;

Source:

Rabbit

Isotype:

IgG

Immunogen Catalog Number:

AG1548

GenBank Accession Number:

BC018994

GeneID (NCBI):

4830

UNIPROT ID:

P15531

Full Name:

non-metastatic cells 1, protein (NM23A) expressed in

Calculated MW:

17 kDa

Observed MW:

16-20 kDa

Purification Method:

Protein A purification

CloneNo.:

242670D5

Recommended Dilutions:

WB 1:5000-1:50000

IF/ICC 1:200-1:800

## Applications

Tested Applications:

WB, IF/ICC, FC (Intra), ELISA

Species Specificity:

human, mouse, rat

Positive Controls:

WB : HeLa cells, NIH/3T3 cells, HepG2 cells, A549 cells, MCF-7 cells, Jurkat cells, C6 cells

IF/ICC : MCF-7 cells,

## Background Information

NME1 is also named as NDPKA(Nucleoside diphosphate kinase A), NM23(Metastasis inhibition factor nm23),GAAD(Granzyme A-activated DNase) and belongs to the NDK family.It is a major role in the synthesis of nucleoside triphosphates other than ATP and required for neural development including neural patterning and cell fate determination.It has 3 isoforms produced by alternative splicing.

## Storage

Storage:

Store at -20°C. Stable for one year after shipment.

Storage Buffer:

PBS with 0.02% sodium azide and 50% glycerol pH 7.3.

Aliquoting is unnecessary for -20°C storage

\*\*\* 20ul sizes contain 0.1% BSA

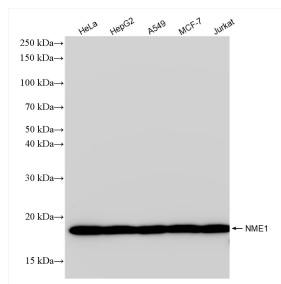
For technical support and original validation data for this product please contact:

T: 1 (888) 4PTGLAB (1-888-478-4522) (toll free in USA), or 1(312) 455-8498 (outside USA)

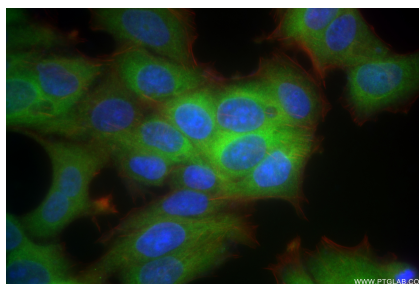
E: [proteintech@ptglab.com](mailto:proteintech@ptglab.com)  
W: [ptglab.com](http://ptglab.com)

This product is exclusively available under Proteintech Group brand and is not available to purchase from any other manufacturer.

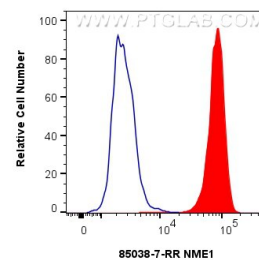
## Selected Validation Data



Various lysates were subjected to SDS PAGE followed by western blot with 85038-7-RR (NME1 antibody) at dilution of 1:10000 incubated at room temperature for 1.5 hours.



Immunofluorescent analysis of (-20°C Ethanol) fixed MCF-7 cells using NME1 antibody (85038-7-RR, Clone: 242670D5) at dilution of 1:400 and CoraLite® 488-Conjugated Goat Anti-Rabbit IgG(H+L) (SA00013-2), CL594-Phalloidin (red).



$1 \times 10^6$  HepG2 cells were intracellularly stained with 0.25  $\mu$ g NME1 Recombinant antibody (85038-7-RR, Clone:242670D5) and CoraLite® 488-Conjugated Goat Anti-Rabbit IgG(H+L) (SA00013-2) (red), or 0.25  $\mu$ g Rabbit IgG Isotype Control RecAb (98136-1-RR, Clone: 240953C9) (blue). Cells were fixed with 4% PFA and permeabilized with Flow Cytometry Perm Buffer (PF00011-C).