

For Research Use Only

RPS4X Recombinant antibody, PBS Only (Detector)

Catalog Number: 85040-2-PBS



Basic Information

Catalog Number: 85040-2-PBS	GenBank Accession Number: BC000472	Purification Method: Protein A purification
Size: 100ug , Concentration: 1 mg/ml by Nanodrop;	GeneID (NCBI): 6191	CloneNo.: 242697F1
Source: Rabbit	UNIPROT ID: P62701	
Isotype: IgG	Full Name: ribosomal protein S4, X-linked	
Immunogen Catalog Number: AG6513	Calculated MW: 263 aa, 30 kDa	

Applications

Tested Applications:
Cytometric bead array, Sandwich ELISA, Indirect ELISA, Sample test

Species Specificity:
human

Product Information

85040-2-PBS targets RPS4X as part of a matched antibody pair:

MP01754-1: 85040-1-PBS capture and 85040-2-PBS detection (validated in Cytometric bead array)

MP01754-3: 85040-4-PBS capture and 85040-2-PBS detection (validated in Sandwich ELISA)

Unconjugated rabbit recombinant monoclonal antibody in PBS only (BSA and azide free) storage buffer at a concentration of 1 mg/mL, ready for conjugation. Created using Proteintech's proprietary in-house recombinant technology. Recombinant production enables unrivalled batch-to-batch consistency, easy scale-up, and future security of supply.

This conjugation ready format makes antibodies ideal for use in many applications including: ELISAs, multiplex assays requiring matched pairs, mass cytometry, and multiplex imaging applications. Antibody use should be optimized by the end user for each application and assay.

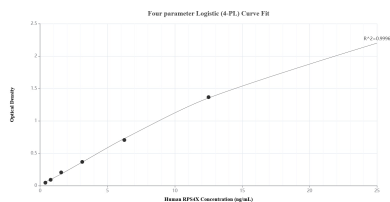
Storage

Storage:
Store at -80°C.
Storage Buffer:
PBS Only

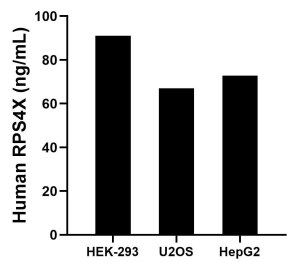
For technical support and original validation data for this product please contact:
T: 1 (888) 4PTGLAB (1-888-478-4522) (toll free in USA), or 1(312) 455-8498 (outside USA)
E: proteintech@ptglab.com
W: ptglab.com

This product is exclusively available under Proteintech Group brand and is not available to purchase from any other manufacturer.

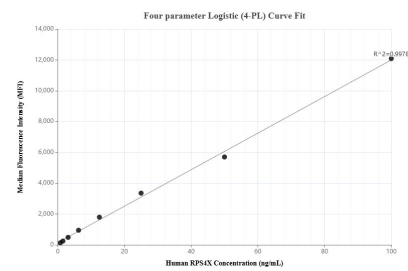
Selected Validation Data



Sandwich ELISA standard curve of MP01754-3, Human RPS4X Recombinant Matched Antibody Pair - PBS only. 85040-4-PBS was coated to a plate as the capture antibody and incubated with serial dilutions of standard Ag6513. 85040-2-PBS was HRP conjugated as the detection antibody. Range: 0.391-25 ng/mL



The mean RPS4X concentration was determined to be 91.01 ng/mL in HEK-293 cell extract based on a 2.70 mg/mL extract load, 66.99 ng/mL in U2OS cell extract based on a 1.40 mg/mL extract load and 72.80 ng/mL in HepG2 cell extract based on a 2.30 mg/mL extract load.



Cytometric bead array standard curve of MP01754-1, RPS4X Recombinant Matched Antibody Pair, PBS Only. Capture antibody: 85040-1-PBS. Detection antibody: 85040-2-PBS. Standard: Ag6513. Range: 0.781-100 ng/mL