

For Research Use Only

# SYNGAP1 Recombinant antibody, PBS Only

Catalog Number: 85045-1-PBS



## Basic Information

<b>Catalog Number:</b> 85045-1-PBS	<b>GenBank Accession Number:</b> NM_006772	<b>Purification Method:</b> Protein A purification
<b>Size:</b> 100ug , Concentration: 1 mg/ml by Nanodrop;	<b>GeneID (NCBI):</b> 8831	<b>CloneNo.:</b> 242255E3
<b>Source:</b> Rabbit	<b>UNIPROT ID:</b> Q96PV0	
<b>Isotype:</b> IgG	<b>Full Name:</b> synaptic Ras GTPase activating protein 1 homolog (rat)	
	<b>Calculated MW:</b> 1343 aa, 148 kDa	
	<b>Observed MW:</b> 140 kDa	

## Applications

**Tested Applications:**  
WB, IF/ICC, Indirect ELISA

**Species Specificity:**  
human, mouse, rat

## Background Information

SYNGAP1, also named as KIAA1938, is the major constituent of the PSD essential for postsynaptic signaling. It's an inhibitory regulator of the Ras-cAMP pathway. SYNGAP1 is a member of the NMDAR signaling complex in excitatory synapses, it may play a role in NMDAR-dependent control of AMPAR potentiation, AMPAR membrane trafficking and synaptic plasticity. SYNGAP1 regulates AMPAR-mediated miniature excitatory postsynaptic currents. SYNGAP1 may be involved in certain forms of brain injury, leading to long-term learning and memory deficits. Defects in SYNGAP1 are the cause of mental retardation autosomal dominant type 5 (MRD5).

## Storage

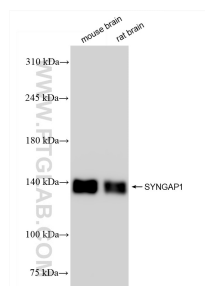
**Storage:**  
Store at -80°C.

**Storage Buffer:**  
PBS Only

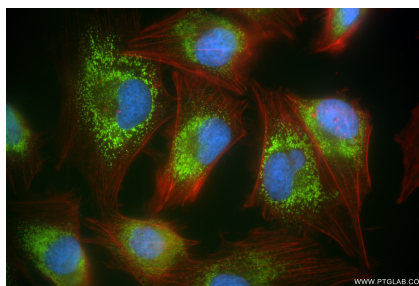
For technical support and original validation data for this product please contact:  
T: 1 (888) 4PTGLAB (1-888-478-4522) (toll free in USA), or 1(312) 455-8498 (outside USA)  
E: proteintech@ptglab.com  
W: ptglab.com

This product is exclusively available under Proteintech Group brand and is not available to purchase from any other manufacturer.

## Selected Validation Data



Various lysates were subjected to SDS PAGE followed by western blot with 85045-1-RR (SYNGAP1 antibody) at dilution of 1:10000 incubated at room temperature for 1.5 hours. This data was developed using the same antibody clone with 85045-1-PBS in a different storage buffer formulation.



Immunofluorescent analysis of (4% PFA) fixed U-251 cells using SYNGAP1 antibody (85045-1-RR, Clone: 242255E3) at dilution of 1:250 and CoraLite® 488-Conjugated Goat Anti-Rabbit IgG(H+L) (SA00013-2), CL594-Phalloidin (red). This data was developed using the same antibody clone with 85045-1-PBS in a different storage buffer formulation.