

For Research Use Only

DCP1A Recombinant antibody

Catalog Number: 85047-5-RR



Basic Information

Catalog Number: 85047-5-RR	GenBank Accession Number: BC007439	Purification Method: Protein A purification
Size: 100ul , Concentration: 1000 ug/ml by Nanodrop;	GeneID (NCBI): 55802	CloneNo.: 242553F2
Source: Rabbit	UNIPROT ID: Q9NPI6	Recommended Dilutions: WB 1:5000-1:50000 IF/ICC 1:200-1:800
Isotype: IgG	Full Name: DCP1 decapping enzyme homolog A (S. cerevisiae)	
Immunogen Catalog Number: AG18027	Calculated MW: 582 aa, 63 kDa	
	Observed MW: 70-75 kDa	

Applications

Tested Applications: WB, IF/ICC, ELISA	Positive Controls:
Species Specificity: human, mouse, rat	WB : HCT 116 cells, HEK-293 cells, Jurkat cells, MCF-7 cells, SW480 cells, mouse brain tissue, rat brain tissue
	IF/ICC : HepG2 cells,

Background Information

DCP1 decapping enzyme homolog A (*S. cerevisiae*), known as mRNA-decapping enzyme 1A (DCP1A), is necessary for the degradation of mRNAs, both in normal mRNA turnover and in nonsense-mediated mRNA decay. Removes the 7-methyl guanine cap structure from mRNA molecules, yielding a 5'-phosphorylated mRNA fragment and 7m-GDP. Contributes to the transactivation of target genes after stimulation by TGFβ1. This antibody specifically reacts with the 70kd DCP1A protein.

Storage

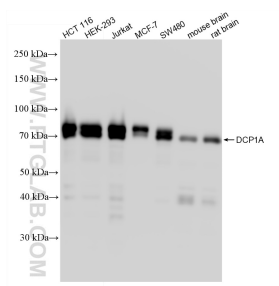
Storage:
Store at -20°C. Stable for one year after shipment.
Storage Buffer:
PBS with 0.02% sodium azide and 50% glycerol, pH7.3
Aliquoting is unnecessary for -20°C storage

*** 20ul sizes contain 0.1% BSA

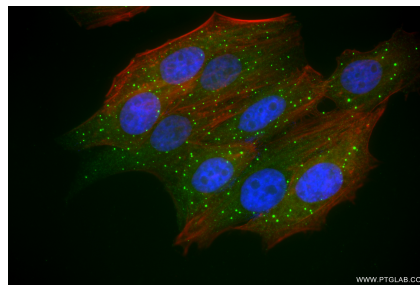
For technical support and original validation data for this product please contact:
T: 1 (888) 4PTGLAB (1-888-478-4522) (toll free in USA), or 1(312) 455-8498 (outside USA)
E: proteintech@ptglab.com
W: ptglab.com

This product is exclusively available under Proteintech Group brand and is not available to purchase from any other manufacturer.

Selected Validation Data



Various lysates were subjected to SDS PAGE followed by western blot with 85047-5-RR (DCP1A antibody) at dilution of 1:30000 incubated at room temperature for 1.5 hours.



Immunofluorescent analysis of (4% PFA) fixed HepG2 cells using DCP1A antibody (85047-5-RR, Clone: 242553F2) at dilution of 1:400 and CoraLite® 488-Conjugated Goat Anti-Rabbit IgG(H+L) (SA00013-2), CL594-Phalloidin (red).