

For Research Use Only

LAMB3 Recombinant antibody, PBS Only (Capture)

Catalog Number: 85055-2-PBS



Basic Information

| | | |
|---|--|---|
| Catalog Number: 85055-2-PBS | GenBank Accession Number: BC075838 | Purification Method: Protein A purification |
| Size: 100ug, Concentration: 1 mg/ml by Nanodrop; | GeneID (NCBI): 3914 | CloneNo.: 242442G1 |
| Source: Rabbit | UNIPROT ID: Q13751 | |
| Isotype: IgG | Full Name: laminin, beta 3 | |
| Immunogen Catalog Number: AG25192 | Calculated MW: 1172 aa, 130 kDa | |

Applications

Tested Applications:
Cytometric bead array, Sandwich ELISA, Indirect ELISA,
Sample test

Species Specificity:
human

Product Information

85055-2-PBS targets LAMB3 as part of a matched antibody pair:

MP01812-1: 85055-2-PBS capture and 85055-3-PBS detection (validated in Cytometric bead array, Sandwich ELISA)

Unconjugated rabbit recombinant monoclonal antibody in PBS only (BSA and azide free) storage buffer at a concentration of 1 mg/mL, ready for conjugation. Created using Proteintech's proprietary in-house recombinant technology. Recombinant production enables unrivalled batch-to-batch consistency, easy scale-up, and future security of supply.

This conjugation ready format makes antibodies ideal for use in many applications including: ELISAs, multiplex assays requiring matched pairs, mass cytometry, and multiplex imaging applications. Antibody use should be optimized by the end user for each application and assay.

Storage

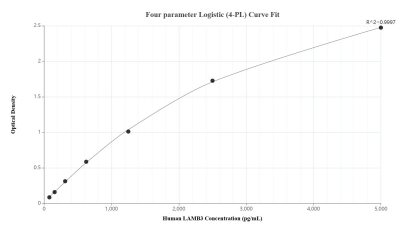
Storage:
Store at -80°C.

Storage Buffer:
PBS Only

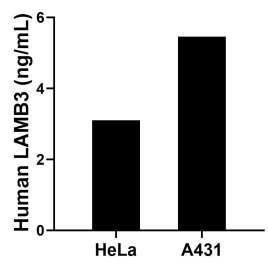
For technical support and original validation data for this product please contact:
T: 1 (888) 4PTGLAB (1-888-478-4522) (toll free in USA), or 1(312) 455-8498 (outside USA)
E: proteintech@ptglab.com
W: ptglab.com

This product is exclusively available under Proteintech Group brand and is not available to purchase from any other manufacturer.

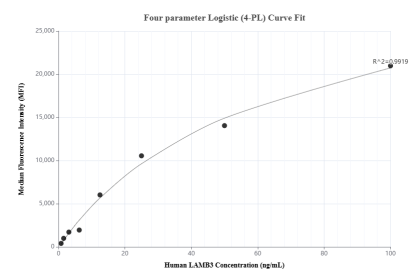
Selected Validation Data



Sandwich ELISA standard curve of MP01812-1, Human LAMB3 Recombinant Matched Antibody Pair - PBS only. 85055-2-PBS was coated to a plate as the capture antibody and incubated with serial dilutions of standard Ag25192. 85055-3-PBS was HRP conjugated as the detection antibody. Range: 78.1-5000 pg/mL.



The mean LAMB3 concentration was determined to be 3.1 ng/mL in HeLa cell extract based on a 1.5 mg/mL extract load and 5.5 ng/mL in A431 cell extract based on a 1.5 mg/mL extract load.



Cytometric bead array standard curve of MP01812-1, LAMB3 Recombinant Matched Antibody Pair, PBS Only. Capture antibody: 85055-2-PBS. Detection antibody: 85055-3-PBS. Standard: Ag25192. Range: 0.781-100 ng/mL.