

For Research Use Only

# LAMB3 Recombinant antibody, PBS Only

Catalog Number: 85055-4-PBS



## Basic Information

Catalog Number:

85055-4-PBS

Size:

100ug, Concentration: 1 mg/ml by Nanodrop;

Source:

Rabbit

Isotype:

IgG

Immunogen Catalog Number:

AG25192

GenBank Accession Number:

BC075838

GeneID (NCBI):

3914

UNIPROT ID:

Q13751

Full Name:

laminin, beta 3

Calculated MW:

1172 aa, 130 kDa

Observed MW:

130-140 kDa

Purification Method:

Protein A purification

CloneNo.:

242442A8

## Applications

Tested Applications:

WB, Indirect ELISA

Species Specificity:

human, rat

## Storage

Storage:

Store at -80°C.

Storage Buffer:

PBS Only

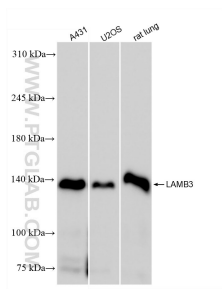
For technical support and original validation data for this product please contact:

T: 1 (888) 4PTGLAB (1-888-478-4522) (toll free in USA), or 1(312) 455-8498 (outside USA)

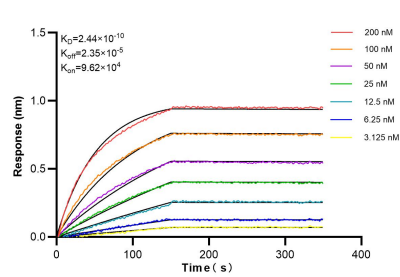
E: [proteintech@ptglab.com](mailto:proteintech@ptglab.com)  
W: [ptglab.com](http://ptglab.com)

This product is exclusively available under Proteintech Group brand and is not available to purchase from any other manufacturer.

## Selected Validation Data



Various lysates were subjected to SDS PAGE followed by western blot with 85055-4-RR (LAMB3 antibody) at dilution of 1:5000 incubated at room temperature for 1.5 hours. This data was developed using the same antibody clone with 85055-4-PBS in a different storage buffer formulation.



Biolayer interferometry (BLI) kinetic assays of 85055-4-RR against Human LAMB3 were performed. The affinity constant is 0.244 nM.