

For Research Use Only

RGS12 Recombinant antibody, PBS Only (Detector)

Catalog Number: 85057-2-PBS



Basic Information

Catalog Number: 85057-2-PBS	GenBank Accession Number: NM_198229	Purification Method: Protein A purification
Size: 100ug , Concentration: 1 mg/ml by Nanodrop;	GeneID (NCBI): 6002	CloneNo.: 242530G11
Source: Rabbit	UNIPROT ID: O14924	
Isotype: IgG	Full Name: regulator of G-protein signaling 12	
Immunogen Catalog Number: AG30731	Calculated MW: 156 kDa	
	Observed MW: 140-150 kDa	

Applications

Tested Applications:
WB, IF/ICC, Cytometric bead array, Sandwich ELISA, Indirect ELISA, Sample test

Species Specificity:
human, mouse, rat

Product Information

85057-2-PBS targets RGS12 as part of a matched antibody pair:

MP01790-1: 85057-1-PBS capture and 85057-2-PBS detection (validated in Cytometric bead array)

MP01790-2: 85057-3-PBS capture and 85057-2-PBS detection (validated in Cytometric bead array, Sandwich ELISA)

Unconjugated rabbit recombinant monoclonal antibody in PBS only (BSA and azide free) storage buffer at a concentration of 1 mg/mL, ready for conjugation. Created using Proteintech's proprietary in-house recombinant technology. Recombinant production enables unrivalled batch-to-batch consistency, easy scale-up, and future security of supply.

This conjugation ready format makes antibodies ideal for use in many applications including: ELISAs, multiplex assays requiring matched pairs, mass cytometry, and multiplex imaging applications. Antibody use should be optimized by the end user for each application and assay.

Storage

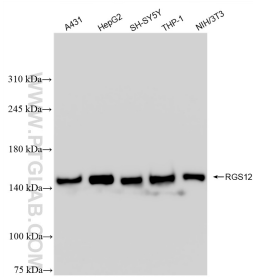
Storage:
Store at -80°C.

Storage Buffer:
PBS Only

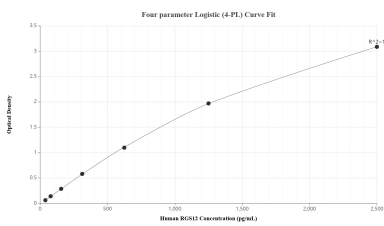
For technical support and original validation data for this product please contact:
T: 1 (888) 4PTGLAB (1-888-478-4522) (toll free in USA), or 1(312) 455-8498 (outside USA)
E: proteintech@ptglab.com
W: ptglab.com

This product is exclusively available under Proteintech Group brand and is not available to purchase from any other manufacturer.

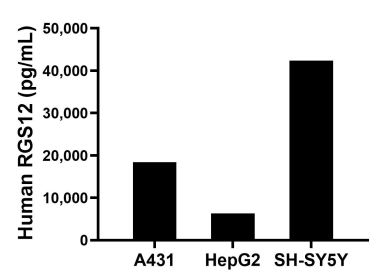
Selected Validation Data



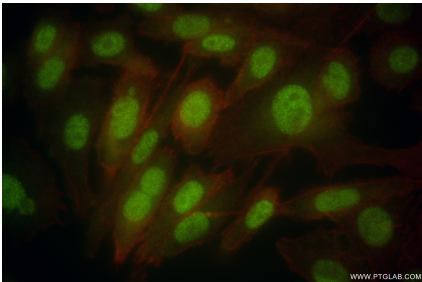
Various lysates were subjected to SDS PAGE followed by western blot with 85057-2-RR (RGS12 antibody) at dilution of 1:10000 incubated at room temperature for 1.5 hours. This data was developed using the same antibody clone with 85057-2-PBS in a different storage buffer formulation.



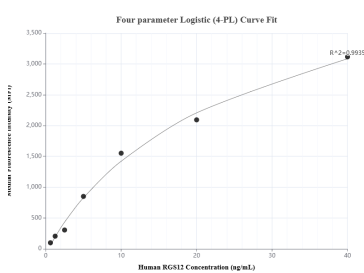
Sandwich ELISA standard curve of MP01790-2, Human RGS12 Recombinant Matched Antibody Pair - PBS only. 85057-3-PBS was coated to a plate as the capture antibody and incubated with serial dilutions of standard Ag30731. 85057-2-PBS was HRP conjugated as the detection antibody. Range: 39.1-2500 pg/mL.



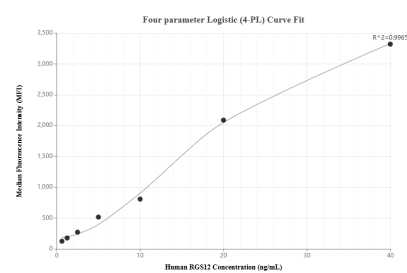
The mean RGS12 concentration was determined to be 18,450.2 pg/mL in A431 cell extract based on a 1.3 mg/mL extract load, 6,327.2 pg/mL in HepG2 cell extract based on a 1.0 mg/mL extract load and 42,390.5 pg/mL in SH-SY5Y cell extract based on a 3.2 mg/mL extract load.



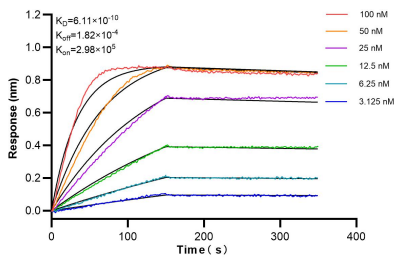
Immunofluorescent analysis of (4% PFA) fixed PC-3 cells using RGS12 antibody (85057-2-RR, Clone: 242530G11) at dilution of 1:400 and CoraLite@488-Conjugated Goat Anti-Rabbit IgG(H+L) (SA00013-2), CL594-Phalloidin (red). This data was developed using the same antibody clone with 85057-2-PBS in a different storage buffer formulation.



Cytometric bead array standard curve of MP01790-2, RGS12 Recombinant Matched Antibody Pair, PBS Only. Capture antibody: 85057-3-PBS. Detection antibody: 85057-2-PBS. Standard: Ag30731. Range: 0.625-40 ng/mL.



Cytometric bead array standard curve of MP01790-1, RGS12 Recombinant Matched Antibody Pair, PBS Only. Capture antibody: 85057-1-PBS. Detection antibody: 85057-2-PBS. Standard: Ag30731. Range: 0.625-40 ng/mL.



Biolayer interferometry (BLI) kinetic assays of 85057-2-RR against Human RGS12 were performed. The affinity constant is 0.611 nM.