

For Research Use Only

PTPN22 Recombinant antibody

Catalog Number: 85062-2-RR



Basic Information

Catalog Number: 85062-2-RR	GenBank Accession Number: BC017785	Purification Method: Protein A purification
Size: 100ul , Concentration: 1000 ug/ml by Nanodrop;	GeneID (NCBI): 26191	CloneNo.: 242688G1
Source: Rabbit	UNIPROT ID: Q9Y2R2	Recommended Dilutions: WB 1:5000-1:50000
Isotype: IgG	Full Name: protein tyrosine phosphatase, non-receptor type 22 (lymphoid)	
Immunogen Catalog Number: AG2397	Calculated MW: 82 kDa, 92 kDa	
	Observed MW: 100-110 kDa	

Applications

Tested Applications: WB, ELISA	Positive Controls: WB : Jurkat cells, Raji cells, Daudi cells
Species Specificity: human	

Background Information

PTPN22 (Tyrosine-protein phosphatase non-receptor type 22) is also named as LyP, PEP, PTPN8. It belongs to the protein-tyrosine phosphatase family and non-receptor class 4 subfamily. It acts as negative regulator of T-cell receptor (TCR) signaling. Defects in PTPN22 are a cause of susceptibility to systemic lupus erythematosus (SLE). It has some isoforms produced by alternative splicing with calculated molecular mass of 79-92 kDa, and apparent molecular mass of 100-110 kDa.

Storage

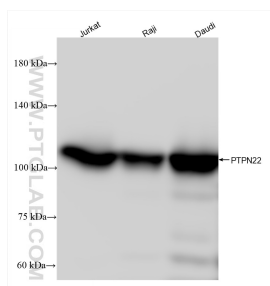
Storage:
Store at -20°C. Stable for one year after shipment.
Storage Buffer:
PBS with 0.02% sodium azide and 50% glycerol pH 7.3.
Aliquoting is unnecessary for -20°C storage

*** 20ul sizes contain 0.1% BSA

For technical support and original validation data for this product please contact:
T: 1 (888) 4PTGLAB (1-888-478-4522) (toll free in USA), or 1(312) 455-8498 (outside USA)
E: proteintech@ptglab.com
W: ptglab.com

This product is exclusively available under Proteintech Group brand and is not available to purchase from any other manufacturer.

Selected Validation Data



Various lysates were subjected to SDS PAGE followed by western blot with 85062-2-RR (PTPN22 antibody) at dilution of 1:10000 incubated at room temperature for 1.5 hours.