

For Research Use Only

# CD27 Recombinant antibody, PBS Only (Detector)

Catalog Number: 85066-1-PBS



## Basic Information

|  |  |   |
|--|--|---|
| <b>Catalog Number:</b><br>85066-1-PBS                      | <b>GenBank Accession Number:</b><br>BC012160 | <b>Purification Method:</b><br>Protein A purification |
| <b>Size:</b><br>100ug, Concentration: 1 mg/ml by Nanodrop; | <b>GeneID (NCBI):</b><br>939                 | <b>CloneNo.:</b><br>242731B7                          |
| <b>Source:</b><br>Rabbit                                   | <b>ENSEMBL Gene ID:</b><br>ENSG00000139193   |   |
| <b>Isotype:</b><br>IgG                                     | <b>UNIPROT ID:</b><br>P26842                 |   |
|  | <b>Full Name:</b><br>CD27 molecule           |   |
|  | <b>Calculated MW:</b><br>29 kDa              |   |

## Applications

**Tested Applications:**  
Cytometric bead array, Sandwich ELISA, Indirect ELISA, Sample test

**Species Specificity:**  
human

## Product Information

85066-1-PBS targets CD27 as part of a matched antibody pair:

MP01811-1: 85066-2-PBS capture and 85066-1-PBS detection (validated in Cytometric bead array)

MP01811-2: 85066-3-PBS capture and 85066-1-PBS detection (validated in Cytometric bead array)

MP01811-3: 85066-3-PBS capture and 85066-1-PBS detection (validated in Sandwich ELISA)

Unconjugated rabbit recombinant monoclonal antibody in PBS only (BSA and azide free) storage buffer at a concentration of 1 mg/mL, ready for conjugation. Created using Proteintech's proprietary in-house recombinant technology. Recombinant production enables unrivalled batch-to-batch consistency, easy scale-up, and future security of supply.

This conjugation ready format makes antibodies ideal for use in many applications including: ELISAs, multiplex assays requiring matched pairs, mass cytometry, and multiplex imaging applications. Antibody use should be optimized by the end user for each application and assay.

## Storage

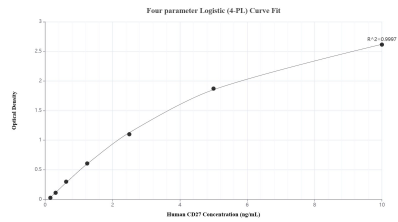
**Storage:**  
Store at -80°C.

**Storage Buffer:**  
PBS Only

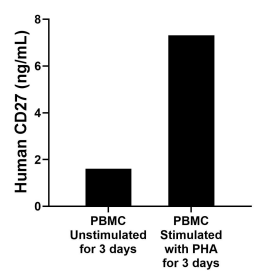
For technical support and original validation data for this product please contact:  
T: 1 (888) 4PTGLAB (1-888-478-4522) (toll free in USA), or 1(312) 455-8498 (outside USA)  
E: [proteintech@ptglab.com](mailto:proteintech@ptglab.com)  
W: [ptglab.com](http://ptglab.com)

This product is exclusively available under Proteintech Group brand and is not available to purchase from any other manufacturer.

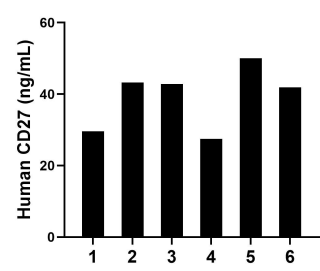
Selected Validation Data



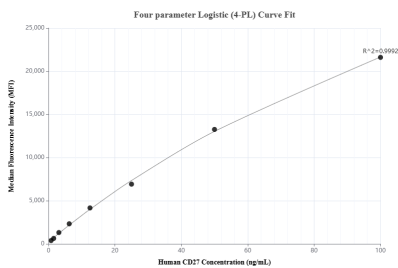
Sandwich ELISA standard curve of MP01811-3, Human CD27 Recombinant Matched Antibody Pair - PBS only. 85066-3-PBS was coated to a plate as the capture antibody and incubated with serial dilutions of standard Eg1644. 85066-1-PBS was HRP conjugated as the detection antibody. Range: 0.156-10 ng/mL.



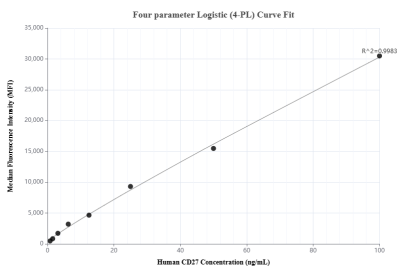
Human peripheral blood mononuclear cells (PBMC) were cultured unstimulated or stimulated with 10 µg/mL PHA for 3 days. The mean CD27 concentration was determined to be 1.61 ng/mL in unstimulated PBMC supernatant, 7.31 ng/mL in PHA stimulated PBMC supernatant.



Serum of six individual healthy human donors was measured. The CD27 concentration of detected samples was determined to be 39.19 ng/mL with a range of 27.45-50.05 ng/mL.



Cytometric bead array standard curve of MP01811-2, CD27 Recombinant Matched Antibody Pair, PBS Only. Capture antibody: 85066-3-PBS. Detection antibody: 85066-1-PBS. Standard: Eg1644. Range: 0.781-100 ng/mL.



Cytometric bead array standard curve of MP01811-1, CD27 Recombinant Matched Antibody Pair, PBS Only. Capture antibody: 85066-2-PBS. Detection antibody: 85066-1-PBS. Standard: Eg1644. Range: 0.781-100 ng/mL.