

For Research Use Only

CD27 Recombinant antibody, PBS Only (Capture)

Catalog Number: 85066-3-PBS



Basic Information

| | | |
|--|--|---|
| Catalog Number: 85066-3-PBS | GenBank Accession Number: BC012160 | Purification Method: Protein A purification |
| Size: 100ug, Concentration: 1 mg/ml by Nanodrop; | GeneID (NCBI): 939 | CloneNo.: 242731G8 |
| Source: Rabbit | ENSEMBL Gene ID: ENSG00000139193 | |
| Isotype: IgG | UNIPROT ID: P26842 | |
| | Full Name: CD27 molecule | |
| | Calculated MW: 29 kDa | |

Applications

Tested Applications:
Cytometric bead array, Sandwich ELISA, Indirect ELISA, Sample test

Species Specificity:
human

Product Information

85066-3-PBS targets CD27 as part of a matched antibody pair:

MP01811-2: 85066-3-PBS capture and 85066-1-PBS detection (validated in Cytometric bead array)

MP01811-3: 85066-3-PBS capture and 85066-1-PBS detection (validated in Sandwich ELISA)

Unconjugated rabbit recombinant monoclonal antibody in PBS only (BSA and azide free) storage buffer at a concentration of 1 mg/mL, ready for conjugation. Created using Proteintech's proprietary in-house recombinant technology. Recombinant production enables unrivalled batch-to-batch consistency, easy scale-up, and future security of supply.

This conjugation ready format makes antibodies ideal for use in many applications including: ELISAs, multiplex assays requiring matched pairs, mass cytometry, and multiplex imaging applications. Antibody use should be optimized by the end user for each application and assay.

Storage

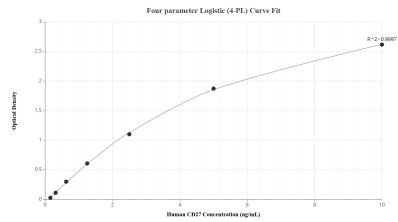
Storage:
Store at -80°C.

Storage Buffer:
PBS Only

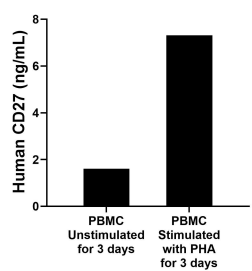
For technical support and original validation data for this product please contact:
T: 1 (888) 4PTGLAB (1-888-478-4522) (toll free in USA), or 1(312) 455-8498 (outside USA)
E: proteintech@ptglab.com
W: ptglab.com

This product is exclusively available under Proteintech Group brand and is not available to purchase from any other manufacturer.

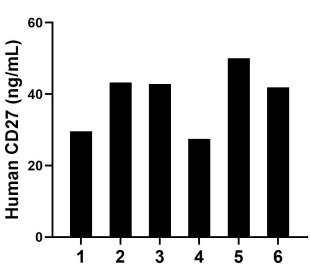
Selected Validation Data



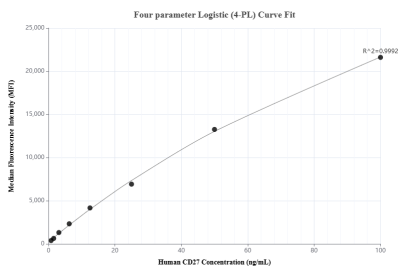
Sandwich ELISA standard curve of MP01811-3, Human CD27 Recombinant Matched Antibody Pair - PBS only. 85066-3-PBS was coated to a plate as the capture antibody and incubated with serial dilutions of standard Eg1644. 85066-1-PBS was HRP conjugated as the detection antibody. Range: 0.156-10 ng/mL.



Human peripheral blood mononuclear cells (PBMC) were cultured unstimulated or stimulated with 10 µg/mL PHA for 3 days. The mean CD27 concentration was determined to be 1.61 ng/mL in unstimulated PBMC supernatant, 7.31 ng/mL in PHA stimulated PBMC supernatant.



Serum of six individual healthy human donors was measured. The CD27 concentration of detected samples was determined to be 39.19 ng/mL with a range of 27.45-50.05 ng/mL.



Cytometric bead array standard curve of MP01811-2, CD27 Recombinant Matched Antibody Pair, PBS Only. Capture antibody: 85066-3-PBS. Detection antibody: 85066-1-PBS. Standard: Eg1644. Range: 0.781-100 ng/mL.