

For Research Use Only

MRPL12 Recombinant antibody, PBS Only

Catalog Number: 85070-5-PBS



Basic Information

Catalog Number:

85070-5-PBS

Size:

100ug, Concentration: 1 mg/ml by Nanodrop;

Source:

Rabbit

Isotype:

IgG

Immunogen Catalog Number:

AG6504

GenBank Accession Number:

BC002344

GeneID (NCBI):

6182

UNIPROT ID:

P52815

Full Name:

mitochondrial ribosomal protein L12

Calculated MW:

21 kDa

Observed MW:

21 kDa

Purification Method:

Protein A purification

CloneNo.:

242622D12

Applications

Tested Applications:

WB, IF/ICC, Indirect ELISA

Species Specificity:

human, rat

Background Information

Mammalian MRPL12 was the first mitochondrial ribosomal protein to be characterized, and is encoded by a nuclear gene. The protein forms a homodimer, localizes predominantly to mitochondria and binds to the large mitochondrial ribosomal subunit [PMID:862670]. It is required for CycD/Cdk4-induced cell growth. In addition, forming a ribosomal stalk with MRPL7, MRPL12 is required for the recruitment of translation elongation factors Tu and G to the large ribosomal subunit [PMID:12370014]. It also a part of a novel regulatory mechanism that coordinates mitochondrial transcription with translation and/or ribosome biogenesis during human mitochondrial gene expression.

Storage

Storage:

Store at -80°C.

Storage Buffer:

PBS only

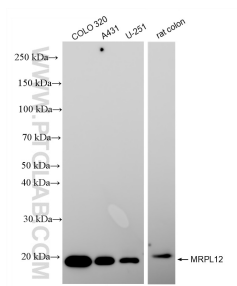
For technical support and original validation data for this product please contact:

T: 1 (888) 4PTGLAB (1-888-478-4522) (toll free in USA), or 1(312) 455-8498 (outside USA)

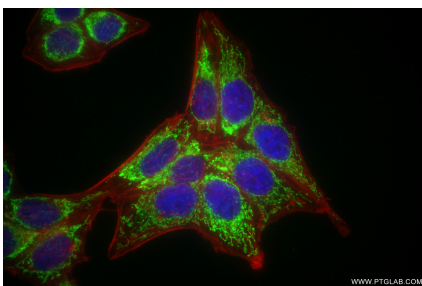
E: proteintech@ptglab.com
W: ptglab.com

This product is exclusively available under Proteintech Group brand and is not available to purchase from any other manufacturer.

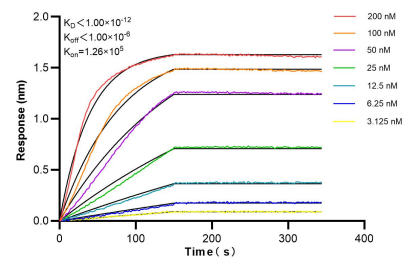
Selected Validation Data



Various lysates were subjected to SDS PAGE followed by western blot with 85070-5-RR (MRPL12 antibody) at dilution of 1:5000 incubated at room temperature for 1.5 hours. This data was developed using the same antibody clone with 85070-5-PBS in a different storage buffer formulation.



Immunofluorescent analysis of (4% PFA) fixed HepG2 cells using MRPL12 antibody (85070-5-RR, Clone: 242622D12) at dilution of 1:1000 and CoraLite® 488-Conjugated Goat Anti-Rabbit IgG(H+L) (SA00013-2), CL594-Phalloidin (red). This data was developed using the same antibody clone with 85070-5-PBS in a different storage buffer formulation.



Biolayer interferometry (BLI) kinetic assays of 85070-5-RR against Human MRPL12 were performed. The affinity constant is below 1 pM.