

For Research Use Only

MRPL12 Recombinant antibody

Catalog Number: 85070-5-RR



Basic Information

Catalog Number: 85070-5-RR	GenBank Accession Number: BC002344	Purification Method: Protein A purification
Size: 100ul , Concentration: 1000 µg/ml by Nanodrop;	GeneID (NCBI): 6182	CloneNo.: 242622D12
Source: Rabbit	UNIPROT ID: P52815	Recommended Dilutions: WB 1:2000-1:10000 IF/ICC 1:500-1:2000
Isotype: IgG	Full Name: mitochondrial ribosomal protein L12	
Immunogen Catalog Number: AG6504	Calculated MW: 21 kDa	
	Observed MW: 21 kDa	

Applications

Tested Applications: WB, IF/ICC, ELISA	Positive Controls:
Species Specificity: human, rat	WB : COLO 320 cells, A431 cells, U-251 cells, rat colon tissue IF/ICC : HepG2 cells,

Background Information

Mammalian MRPL12 was the first mitochondrial ribosomal protein to be characterized, and is encoded by a nuclear gene. The protein forms a homodimer, localizes predominantly to mitochondria and binds to the large mitochondrial ribosomal subunit [PMID:862670]. It is required for CycD/Cdk4-induced cell growth. In addition, forming a ribosomal stalk with MRPL7, MRPL12 is required for the recruitment of translation elongation factors Tu and G to the large ribosomal subunit [PMID:12370014]. It also a part of a novel regulatory mechanism that coordinates mitochondrial transcription with translation and/or ribosome biogenesis during human mitochondrial gene expression.

Storage

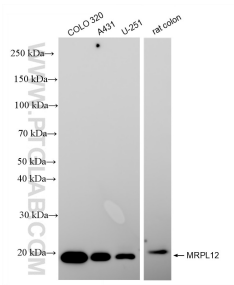
Storage:
Store at -20°C. Stable for one year after shipment.
Storage Buffer:
PBS with 0.02% sodium azide and 50% glycerol
Aliquoting is unnecessary for -20°C storage

*** 20ul sizes contain 0.1% BSA

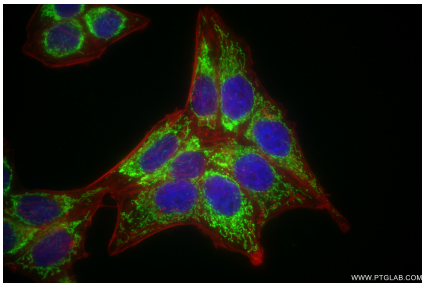
For technical support and original validation data for this product please contact:
T: 1 (888) 4PTGLAB (1-888-478-4522) (toll free in USA), or 1(312) 455-8498 (outside USA)
E: proteintech@ptglab.com
W: ptglab.com

This product is exclusively available under Proteintech Group brand and is not available to purchase from any other manufacturer.

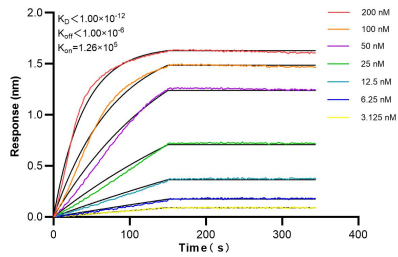
Selected Validation Data



Various lysates were subjected to SDS PAGE followed by western blot with 85070-5-RR (MRPL12 antibody) at dilution of 1:5000 incubated at room temperature for 1.5 hours.



Immunofluorescent analysis of (4% PFA) fixed HepG2 cells using MRPL12 antibody (85070-5-RR, Clone: 242622D12) at dilution of 1:1000 and CoraLite® 488-Conjugated Goat Anti-Rabbit IgG(H+L) (SA00013-2), CL594-Phalloidin (red).



Biolayer interferometry (BLI) kinetic assays of 85070-5-RR against Human MRPL12 were performed. The affinity constant is below 1 pM.