

For Research Use Only

Mouse Il1r2 Recombinant antibody, PBS Only (Capture)

Catalog Number: 85071-2-PBS



Basic Information

Catalog Number: 85071-2-PBS	GenBank Accession Number: NM_010555.4	Purification Method: Protein A purification
Size: 100ug , Concentration: 1 mg/ml by Nanodrop;	GeneID (NCBI): 16178	CloneNo.: 242602C2
Source: Rabbit	UNIPROT ID: P27931	
Isotype: IgG	Full Name: interleukin 1 receptor, type II	
Immunogen Catalog Number: EG2956	Calculated MW: 46 kDa	

Applications

Tested Applications:
Cytometric bead array, Sandwich ELISA, Indirect ELISA, Sample test

Species Specificity:
mouse

Product Information

85071-2-PBS targets Il1r2 as part of a matched antibody pair:

MP01814-1: 85071-2-PBS capture and 85071-3-PBS detection (validated in Cytometric bead array)

MP01814-3: 85071-2-PBS capture and 85071-4-PBS detection (validated in Sandwich ELISA)

Unconjugated rabbit recombinant monoclonal antibody in PBS only (BSA and azide free) storage buffer at a concentration of 1 mg/mL, ready for conjugation. Created using Proteintech's proprietary in-house recombinant technology. Recombinant production enables unrivalled batch-to-batch consistency, easy scale-up, and future security of supply.

This conjugation ready format makes antibodies ideal for use in many applications including: ELISAs, multiplex assays requiring matched pairs, mass cytometry, and multiplex imaging applications. Antibody use should be optimized by the end user for each application and assay.

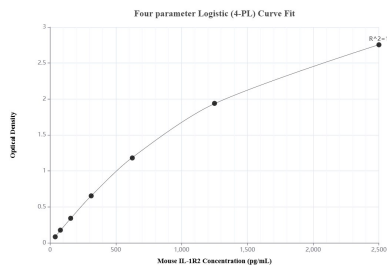
Storage

Storage:
Store at -80°C.
Storage Buffer:
PBS only, pH7.3

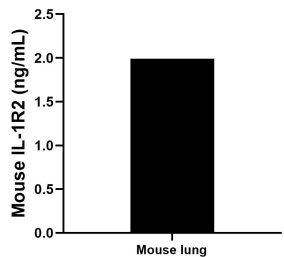
For technical support and original validation data for this product please contact:
T: 1 (888) 4PTGLAB (1-888-478-4522) (toll free in USA), or 1(312) 455-8498 (outside USA)
E: proteintech@ptglab.com
W: ptglab.com

This product is exclusively available under Proteintech Group brand and is not available to purchase from any other manufacturer.

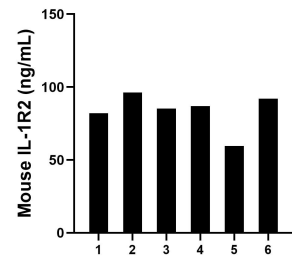
Selected Validation Data



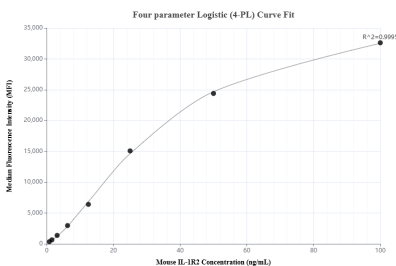
Sandwich ELISA standard curve of MP01814-3, Mouse IL-1R2 Recombinant Matched Antibody Pair - PBS only. 85071-2-PBS was coated to a plate as the capture antibody and incubated with serial dilutions of standard Eg2956. 85071-4-PBS was HRP conjugated as the detection antibody. Range: 39.1-2500 pg/mL



The mean IL-1R2 concentration was determined to be 2.0 ng/mL in mouse lung tissue extract based on a 5.3 mg/mL extract load.



Serum of six mice was measured. The IL-1R2 concentration of detected samples was determined to be 83.6 ng/mL with a range of 59.6-96.2 ng/mL



Cytometric bead array standard curve of MP01814-1, MOUSE IL-1R2 Recombinant Matched Antibody Pair, PBS Only. Capture antibody: 85071-2-PBS. Detection antibody: 85071-3-PBS. Standard: Eg2956. Range: 0.781-100 ng/mL