

For Research Use Only

# IRF7 Recombinant antibody, PBS Only (Capture)

Catalog Number: 85072-2-PBS



## Basic Information

|  |  |   |
|--|--|---|
| <b>Catalog Number:</b><br>85072-2-PBS                      | <b>GenBank Accession Number:</b><br>BC136555 | <b>Purification Method:</b><br>Protein A purification |
| <b>Size:</b><br>100ug, Concentration: 1 mg/ml by Nanodrop; | <b>GeneID (NCBI):</b><br>3665                | <b>CloneNo.:</b><br>242613F8                          |
| <b>Source:</b><br>Rabbit                                   | <b>UNIPROT ID:</b><br>Q92985                 |   |
| <b>Isotype:</b><br>IgG                                     | <b>Full Name:</b><br>IRF 7                   |   |
| <b>Immunogen Catalog Number:</b><br>AG18059                | <b>Calculated MW:</b><br>516 aa, 56 kDa      |   |

## Applications

**Tested Applications:**  
Cytometric bead array, Sandwich ELISA, Indirect ELISA, Sample test

**Species Specificity:**  
human

## Product Information

85072-2-PBS targets IRF7 as part of a matched antibody pair:

MP01791-2: 85072-2-PBS capture and 85072-3-PBS detection (validated in Cytometric bead array, Sandwich ELISA)

Unconjugated rabbit recombinant monoclonal antibody in PBS only (BSA and azide free) storage buffer at a concentration of 1 mg/mL, ready for conjugation. Created using Proteintech's proprietary in-house recombinant technology. Recombinant production enables unrivalled batch-to-batch consistency, easy scale-up, and future security of supply.

This conjugation ready format makes antibodies ideal for use in many applications including: ELISAs, multiplex assays requiring matched pairs, mass cytometry, and multiplex imaging applications. Antibody use should be optimized by the end user for each application and assay.

## Storage

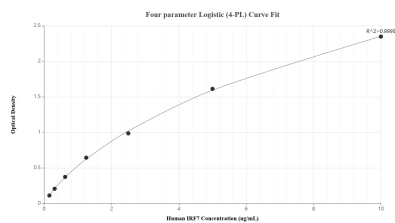
**Storage:**  
Store at -80°C.

**Storage Buffer:**  
PBS Only

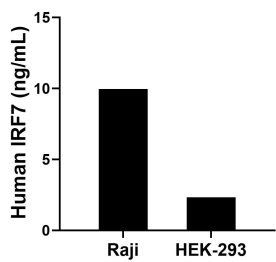
For technical support and original validation data for this product please contact:  
T: 1 (888) 4PTGLAB (1-888-478-4522) (toll free in USA), or 1(312) 455-8498 (outside USA)  
E: [proteintech@ptglab.com](mailto:proteintech@ptglab.com)  
W: [ptglab.com](http://ptglab.com)

This product is exclusively available under Proteintech Group brand and is not available to purchase from any other manufacturer.

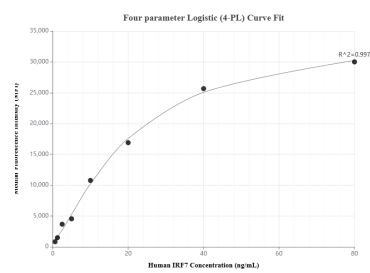
## Selected Validation Data



Sandwich ELISA standard curve of MP01791-2, Human IRF7 Recombinant Matched Antibody Pair - PBS only. 85072-2-PBS was coated to a plate as the capture antibody and incubated with serial dilutions of standard Ag18059. 85072-3-PBS was HRP conjugated as the detection antibody. Range: 0.156-10 ng/mL.



The mean IRF7 concentration was determined to be 9.97 ng/mL in Raji cell extract based on a 3.00 mg/mL extract load and 2.32 ng/mL in HEK-293 cell extract based on a 2.70 mg/mL extract load.



Cytometric bead array standard curve of MP01791-2, IRF7 Recombinant Matched Antibody Pair, PBS Only. Capture antibody: 85072-2-PBS. Detection antibody: 85072-3-PBS. Standard: Ag18059. Range: 0.625-80 ng/mL.