

For Research Use Only

Mouse SLAM/CD150 Recombinant antibody, PBS Only (Capture)

Catalog Number: 85073-1-PBS



Basic Information

Catalog Number: 85073-1-PBS	GenBank Accession Number: NM_013730.4	Purification Method: Protein A purification
Size: 100ug , Concentration: 1 mg/ml by Nanodrop;	GeneID (NCBI): 27218	CloneNo.: 242631B1
Source: Rabbit	UNIPROT ID: Q9QUM4-1	
Isotype: IgG	Full Name: signaling lymphocytic activation molecule family member 1	
	Calculated MW: 38 kDa	
	Observed MW: 70-80 kDa	

Applications

Tested Applications:
WB, Cytometric bead array, Indirect ELISA

Species Specificity:
mouse, rat

Product Information

85073-1-PBS targets SLAM/CD150 as part of a matched antibody pair:

MP01792-1: 85073-1-PBS capture and 85073-2-PBS detection (validated in Cytometric bead array)

Unconjugated rabbit recombinant monoclonal antibody in PBS only (BSA and azide free) storage buffer at a concentration of 1 mg/mL, ready for conjugation. Created using Proteintech's proprietary in-house recombinant technology. Recombinant production enables unrivalled batch-to-batch consistency, easy scale-up, and future security of supply.

This conjugation ready format makes antibodies ideal for use in many applications including: ELISAs, multiplex assays requiring matched pairs, mass cytometry, and multiplex imaging applications. Antibody use should be optimized by the end user for each application and assay.

Background Information

Signaling lymphocytic activation molecule (SLAM, also known as SLAMF1 or CD150) is a 70-95 kDa transmembrane glycoprotein that belongs to the immunoglobulin gene superfamily. SLAM is constitutively expressed on peripheral blood memory T-cells, T-cell clones, immature thymocytes and a proportion of B-cells, and is rapidly induced on naive T-cells after activation. SLAM is involved in T cell stimulation and cytokine production, and may play an important role in the regulation of immune responses to pathogens.

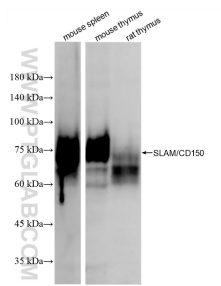
Storage

Storage:
Store at -80°C.
Storage Buffer:
PBS Only

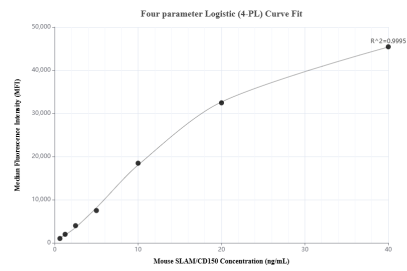
For technical support and original validation data for this product please contact:
T: 1 (888) 4PTGLAB (1-888-478-4522) (toll free in USA), or 1(312) 455-8498 (outside USA)
E: proteintech@ptglab.com
W: ptglab.com

This product is exclusively available under Proteintech Group brand and is not available to purchase from any other manufacturer.

Selected Validation Data



Various lysates were subjected to SDS PAGE followed by western blot with 85073-1-RR (Slamf1 antibody) at dilution of 1:5000 incubated at room temperature for 1.5 hours. This data was developed using the same antibody clone with 85073-1-PBS in a different storage buffer formulation.



Cytometric bead array standard curve of MP01792-1, MOUSE SLAM/CD150 Recombinant Matched Antibody Pair, PBS Only. Capture antibody: 85073-1-PBS. Detection antibody: 85073-2-PBS. Standard: Eg2787. Range: 0.625-40 ng/mL.