

For Research Use Only

SLAM/CD150 Recombinant antibody

Catalog Number: 85073-1-RR



Basic Information

Catalog Number:

85073-1-RR

Size:

100ul, Concentration: 1000 ug/ml by Nanodrop;

Source:

Rabbit

Isotype:

IgG

GenBank Accession Number:

NM_013730.4

GeneID (NCBI):

27218

UNIPROT ID:

Q9QUM4-1

Full Name:

signaling lymphocytic activation molecule family member 1

Calculated MW:

38 kDa

Observed MW:

70-80 kDa

Purification Method:

Protein A purification

CloneNo.:

242631B1

Recommended Dilutions:

WB 1:2000-1:10000

Applications

Tested Applications:

WB, ELISA

Species Specificity:

mouse, rat

Positive Controls:

WB: mouse spleen tissue, mouse thymus tissue, rat thymus tissue

Background Information

Signaling lymphocytic activation molecule (SLAM, also known as SLAMF1 or CD150) is a 70-95 kDa transmembrane glycoprotein that belongs to the immunoglobulin gene superfamily. SLAM is constitutively expressed on peripheral blood memory T-cells, T-cell clones, immature thymocytes and a proportion of B-cells, and is rapidly induced on naive T-cells after activation. SLAM is involved in T cell stimulation and cytokine production, and may play an important role in the regulation of immune responses to pathogens.

Storage

Storage:

Store at -20°C. Stable for one year after shipment.

Storage Buffer:

PBS with 0.02% sodium azide and 50% glycerol pH 7.3.

Aliquoting is unnecessary for -20°C storage

*** 20ul sizes contain 0.1% BSA

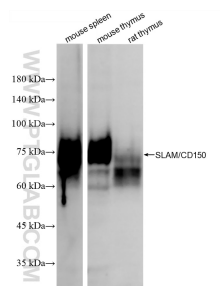
For technical support and original validation data for this product please contact:

T: 1 (888) 4PTGLAB (1-888-478-4522) (toll free in USA), or 1(312) 455-8498 (outside USA)

E: proteintech@ptglab.com
W: ptglab.com

This product is exclusively available under Proteintech Group brand and is not available to purchase from any other manufacturer.

Selected Validation Data



Various lysates were subjected to SDS PAGE followed by western blot with 85073-1-RR (Slamf1 antibody) at dilution of 1:5000 incubated at room temperature for 1.5 hours.