

For Research Use Only

CEL Recombinant antibody

Catalog Number: 85081-4-RR



Basic Information

Catalog Number: 85081-4-RR	GenBank Accession Number: BC042510	Purification Method: Protein A purification
Size: 100ul , Concentration: 1000 ug/ml by Nanodrop;	GeneID (NCBI): 1056	CloneNo.: 242761B11
Source: Rabbit	UNIPROT ID: P19835	Recommended Dilutions: WB 1:5000-1:50000
Isotype: IgG	Full Name: carboxyl ester lipase (bile salt-stimulated lipase)	
Immunogen Catalog Number: AG5262	Calculated MW: 79 kDa	
	Observed MW: 79 kDa	

Applications

Tested Applications: WB, ELISA	Positive Controls: WB : HeLa cells, MCF-7 cells, Raji cells
Species Specificity: human	

Background Information

Bile salt-activated lipase, previously named cholesterol esterase or bile salt-stimulated (or dependent) lipase, is a 74 kDa lipolytic enzyme capable of hydrolyzing cholesteryl esters, tri-, di-, and mono-acylglycerols, phospholipids, lysophospholipids, and ceramide(PMID:12454261). The same enzyme is present as a major protein in milk and as a minor constituent in liver, activated macrophages, and endothelial cells(PMID:11733511). Defects in CEL are a cause of maturity-onset diabetes of the young type 8 with exocrine dysfunction (MODY8)(PMID:16369531). The full length protein has 11 glycosylation sites. It has 2 isoforms produced by alternative splicing.

Storage

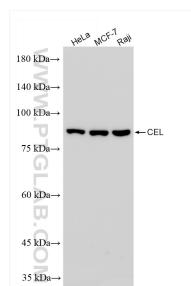
Storage:
Store at -20°C. Stable for one year after shipment.
Storage Buffer:
PBS with 0.02% sodium azide and 50% glycerol pH 7.3.
Aliquoting is unnecessary for -20°C storage

*** 20ul sizes contain 0.1% BSA

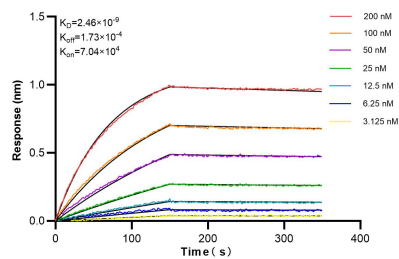
For technical support and original validation data for this product please contact:
T: 1 (888) 4PTGLAB (1-888-478-4522) (toll free in USA), or 1(312) 455-8498 (outside USA)
E: proteintech@ptglab.com
W: ptglab.com

This product is exclusively available under Proteintech Group brand and is not available to purchase from any other manufacturer.

Selected Validation Data



Various lysates were subjected to SDS PAGE followed by western blot with 85081-4-RR (CEL antibody) at dilution of 1:10000 incubated at room temperature for 1.5 hours.



Biolayer interferometry (BLI) kinetic assays of 85081-4-RR against Human CEL were performed. The affinity constant is 2.46 nM.