

For Research Use Only

# RBPMS Recombinant antibody

Catalog Number: 85086-5-RR



## Basic Information

<b>Catalog Number:</b> 85086-5-RR	<b>GenBank Accession Number:</b> BC003608	<b>Purification Method:</b> Protein A purification
<b>Size:</b> 100ul , Concentration: 1000 ug/ml by Nanodrop;	<b>GeneID (NCBI):</b> 11030	<b>CloneNo.:</b> 24273087
<b>Source:</b> Rabbit	<b>UNIPROT ID:</b> Q93062	<b>Recommended Dilutions:</b> WB 1:2000-1:10000 IHC 1:500-1:2000 IF-P 1:250-1:1000 IF/ICC 1:50-1:500
<b>Isotype:</b> IgG	<b>Full Name:</b> RNA binding protein with multiple splicing	
<b>Immunogen Catalog Number:</b> AG7256	<b>Calculated MW:</b> 22 kDa	
	<b>Observed MW:</b> 28-30 kDa	

## Applications

<b>Tested Applications:</b> WB, IHC, IF/ICC, IF-P, ELISA	<b>Positive Controls:</b>
<b>Species Specificity:</b> human, mouse, rat	<b>WB :</b> HEK-293T cells, HepG2 cells, SKOV-3 cells, MDA-MB-231 cells, A549 cells, mouse heart tissue, rat heart tissue
<b>Note-IHC: suggested antigen retrieval with TE buffer pH 9.0; (*) Alternatively, antigen retrieval may be performed with citrate buffer pH 6.0</b>	<b>IHC :</b> mouse eye tissue, <b>IF-P :</b> mouse retina tissue, <b>IF/ICC :</b> HepG2 cells,

## Background Information

RBPMS is a member of the RNA recognition motif family of RNA-binding proteins. It has a single, putative RNA recognition motif in its N-terminus.

## Storage

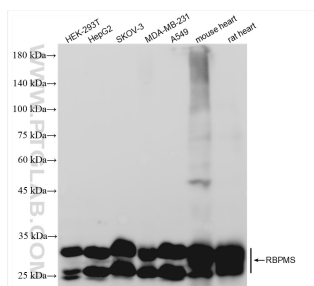
**Storage:**  
Store at -20°C. Stable for one year after shipment.  
**Storage Buffer:**  
PBS with 0.02% sodium azide and 50% glycerol  
**Aliquoting is unnecessary for -20°C storage**

\*\*\* 20ul sizes contain 0.1% BSA

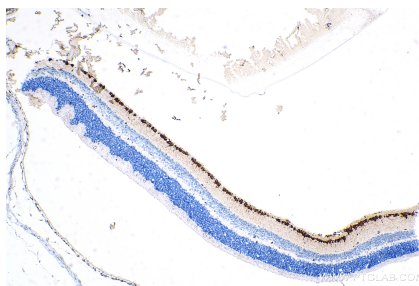
For technical support and original validation data for this product please contact:  
T: 1 (888) 4PTGLAB (1-888-478-4522) (toll free in USA), or 1(312) 455-8498 (outside USA)  
E: proteintech@ptglab.com  
W: ptglab.com

This product is exclusively available under Proteintech Group brand and is not available to purchase from any other manufacturer.

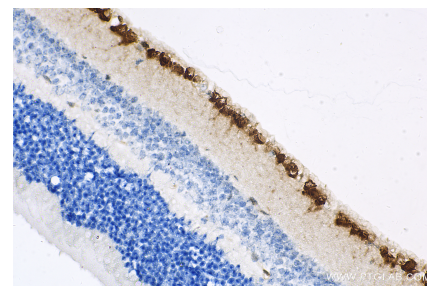
## Selected Validation Data



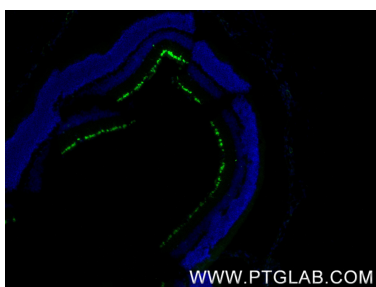
Various lysates were subjected to SDS PAGE followed by western blot with 85086-5-RR (RBPMS antibody) at dilution of 1:5000 incubated at room temperature for 1.5 hours.



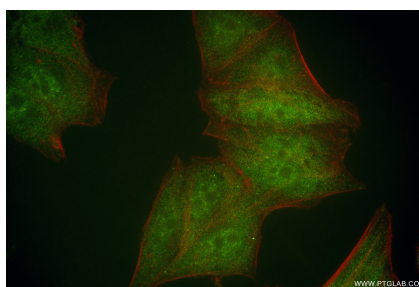
Immunohistochemical analysis of paraffin-embedded mouse eye tissue slide using 85086-5-RR (RBPMS antibody) at dilution of 1:1000 (under 10x lens). Heat mediated antigen retrieval with Tris-EDTA buffer (pH 9.0).



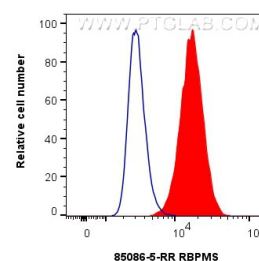
Immunohistochemical analysis of paraffin-embedded mouse eye tissue slide using 85086-5-RR (RBPMS antibody) at dilution of 1:1000 (under 40x lens). Heat mediated antigen retrieval with Tris-EDTA buffer (pH 9.0).



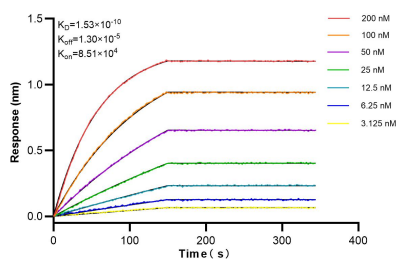
Immunofluorescent analysis of (4% PFA) fixed paraffin-embedded mouse retina tissue using RBPMS antibody (85086-5-RR, Clone: 242730B7) at dilution of 1:500 and CoraLite®488-Conjugated Goat Anti-Rabbit IgG(H+L) (SA00013-2). Heat mediated antigen retrieval with Tris-EDTA buffer (pH 9.0).



Immunofluorescent analysis of (4% PFA) fixed HepG2 cells using RBPMS antibody (85086-5-RR, Clone: 242730B7) at dilution of 1:200 and CoraLite®488-Conjugated Goat Anti-Rabbit IgG(H+L) (SA00013-2), CL594-Phalloidin (red).



$1 \times 10^6$  A549 cells were intracellularly stained with 0.25  $\mu$ g RBPMS Recombinant antibody (85086-5-RR, Clone: 242730B7) and CoraLite®488-Conjugated Goat Anti-Rabbit IgG(H+L) (SA00013-2) (red), or 0.25  $\mu$ g Rabbit IgG Isotype Control RecAb (98136-1-RR, Clone: 240953C9) (blue). Cells were fixed with 4% PFA and permeabilized with Flow Cytometry Perm Buffer (PF00011-C).



Biolayer interferometry (BLI) kinetic assays of 85086-5-RR against Human RBPMS were performed. The affinity constant is 0.153 nM.