

For Research Use Only

C2 Recombinant antibody, PBS Only (Capture/Detector)

Catalog Number: 85088-2-PBS



Basic Information

Catalog Number: 85088-2-PBS	GenBank Accession Number: NM_000063.6	Purification Method: Protein A purification
Size: 100ug, Concentration: 1 mg/ml by Nanodrop;	GeneID (NCBI): 717	CloneNo.: 242739F4
Source: Rabbit	UNIPROT ID: P06681-1	
Isotype: IgG	Full Name: complement component 2	
	Calculated MW: 83 kDa	

Applications

Tested Applications:
Cytometric bead array, Sandwich ELISA, Indirect ELISA,
Sample test

Species Specificity:
human

Product Information

85088-2-PBS targets C2 as part of a matched antibody pair:

MP01780-1: 85088-3-PBS capture and 85088-2-PBS detection (validated in Cytometric bead array)

MP01780-3: 85088-2-PBS capture and 85088-3-PBS detection (validated in Sandwich ELISA)

Unconjugated rabbit recombinant monoclonal antibody in PBS only (BSA and azide free) storage buffer at a concentration of 1 mg/mL, ready for conjugation. Created using Proteintech's proprietary in-house recombinant technology. Recombinant production enables unrivalled batch-to-batch consistency, easy scale-up, and future security of supply.

This conjugation ready format makes antibodies ideal for use in many applications including: ELISAs, multiplex assays requiring matched pairs, mass cytometry, and multiplex imaging applications. Antibody use should be optimized by the end user for each application and assay.

Storage

Storage:
Store at -80°C.

Storage Buffer:
PBS Only

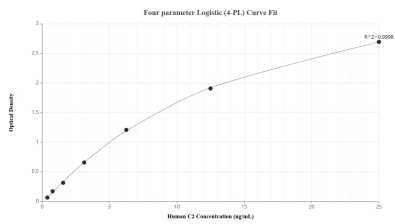
For technical support and original validation data for this product please contact:

T: 1 (888) 4PTGLAB (1-888-478-4522) (toll free
in USA), or 1(312) 455-8498 (outside USA)

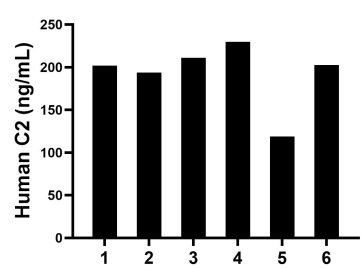
E: proteintech@ptglab.com
W: ptglab.com

This product is exclusively available under Proteintech Group brand and is not available to purchase from any other manufacturer.

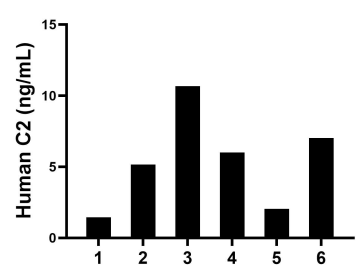
Selected Validation Data



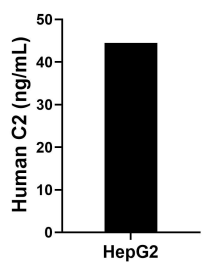
Sandwich ELISA standard curve of MP01780-3, Human C2 Recombinant Matched Antibody Pair - PBS only. 85088-2-PBS was coated to a plate as the capture antibody and incubated with serial dilutions of standard Eg3058. 85088-3-PBS was HRP conjugated as the detection antibody. Range: 0.391-25 ng/mL.



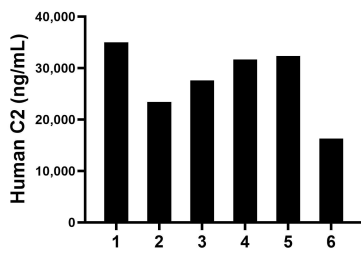
Human milk of six individual healthy human donors was measured. The C2 concentration of detected samples was determined to be 192.92 ng/mL with a range of 118.70-229.78 ng/mL.



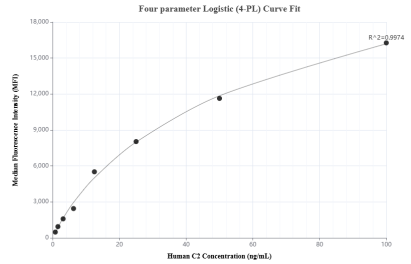
Saliva of six individual healthy human donors was measured. The C2 concentration of detected samples was determined to be 5.39 ng/mL with a range of 1.44-10.68 ng/mL.



HepG2 were cultured in DMEM supplemented with 10% fetal bovine serum, 2.5 mM L-glutamine, 100 U/mL penicillin, and 100 µg/mL streptomycin sulfate. An aliquot of the cell culture supernate was removed, assayed for human C2, and measured 44.51 ng/mL.



Serum of six individual healthy human donors was measured. The C2 concentration of detected samples was determined to be 27,730.87 ng/mL with a range of 16,308.58-35,021.63 ng/mL.



Cytometric bead array standard curve of MP01780-1, C2 Recombinant Matched Antibody Pair, PBS Only. Capture antibody: 85088-3-PBS. Detection antibody: 85088-2-PBS. Standard: Eg3058. Range: 0.781-100 ng/mL.