

For Research Use Only

SUN2 Recombinant antibody, PBS Only (Capture)

Catalog Number: 85103-3-PBS



Basic Information

Catalog Number: 85103-3-PBS	GenBank Accession Number: BC111717	Purification Method: Protein A purification
Size: 100ug , Concentration: 1 mg/ml by Nanodrop;	GeneID (NCBI): 25777	CloneNo.: 242533G3
Source: Rabbit	UNIPROT ID: Q9UH99	
Isotype: IgG	Full Name: unc-84 homolog B (C. elegans)	
Immunogen Catalog Number: AG16077	Calculated MW: 717 aa, 80 kDa	
	Observed MW: 80-85 kDa	

Applications

Tested Applications:
WB, IHC, IF/ICC, FC (Intra), Cytometric bead array, Indirect ELISA

Species Specificity:
human

Product Information

85103-3-PBS targets SUN2 as part of a matched antibody pair:

MP01849-1: 85103-3-PBS capture and 85103-1-PBS detection (validated in Cytometric bead array)

MP01849-2: 85103-3-PBS capture and 85103-2-PBS detection (validated in Cytometric bead array)

Unconjugated rabbit recombinant monoclonal antibody in PBS only (BSA and azide free) storage buffer at a concentration of 1 mg/mL, ready for conjugation. Created using Proteintech's proprietary in-house recombinant technology. Recombinant production enables unrivalled batch-to-batch consistency, easy scale-up, and future security of supply.

This conjugation ready format makes antibodies ideal for use in many applications including: ELISAs, multiplex assays requiring matched pairs, mass cytometry, and multiplex imaging applications. Antibody use should be optimized by the end user for each application and assay.

Background Information

SUN2, also known as UNC84B, RAB5IP, belongs to the SUN (Sad1 and UNC84) protein family, which is a group of conserved proteins in eukaryotes. SUN2 is a key component of the LINC (Linker of Nucleoskeleton and Cytoskeleton) complex, which connects the nuclear lamina to the cytoskeleton. This connection is crucial for the transmission of mechanical forces across the nuclear envelope and for nuclear movement and positioning (PMID: 18396275).

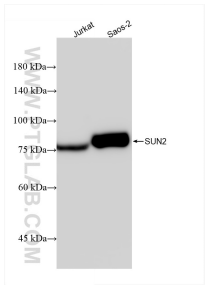
Storage

Storage:
Store at -80°C.
Storage Buffer:
PBS Only

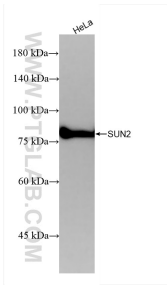
For technical support and original validation data for this product please contact:
T: 1 (888) 4PTGLAB (1-888-478-4522) (toll free in USA), or 1(312) 455-8498 (outside USA)
E: proteintech@ptglab.com
W: ptglab.com

This product is exclusively available under Proteintech Group brand and is not available to purchase from any other manufacturer.

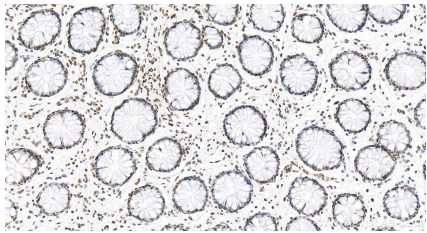
Selected Validation Data



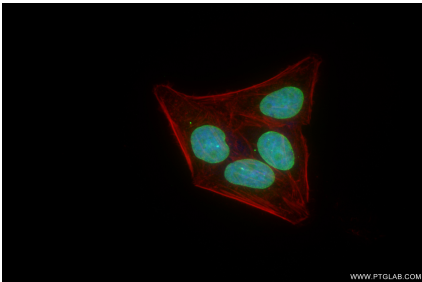
Various lysates were subjected to SDS PAGE followed by western blot with 85103-3-RR (UNC84B antibody) at dilution of 1:10000 incubated at room temperature for 1.5 hours. This data was developed using the same antibody clone with 85103-3-PBS in a different storage buffer formulation.



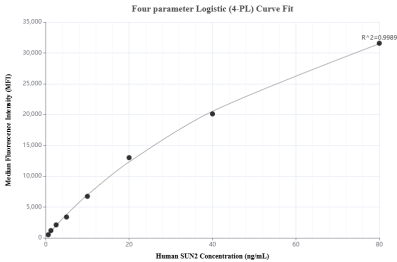
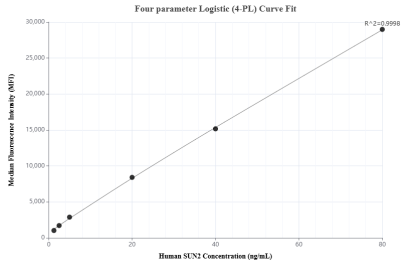
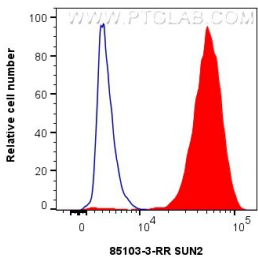
HeLa cells were subjected to SDS PAGE followed by western blot with 85103-3-RR (UNC84B antibody) at dilution of 1:10000 incubated at room temperature for 1.5 hours. This data was developed using the same antibody clone with 85103-3-PBS in a different storage buffer formulation.



Immunohistochemical analysis of paraffin-embedded human colon tissue slide using 85103-3-RR (SUN2 antibody) at dilution of 1:1000 (under 20x lens). Heat mediated antigen retrieval with Tris-EDTA buffer (pH 9.0). This data was developed using the same antibody clone with 85103-3-PBS in a different storage buffer formulation.

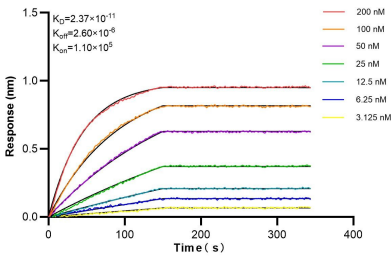


Immunofluorescent analysis of (4% PFA) fixed HepG2 cells using SUN2 antibody (85103-3-RR, Clone: 242533G3) at dilution of 1:1000 and CoraLite@488-Conjugated Goat Anti-Rabbit IgG(H+L) (SA00013-2), CL594-Phalloidin (red). This data was developed using the same antibody clone with 85103-3-PBS in a different storage buffer formulation.



Cytometric bead array standard curve of MP01849-1, SUN2 Recombinant Matched Antibody Pair, PBS Only. Capture antibody: 85103-3-PBS. Detection antibody: 85103-1-PBS. Standard: Ag16077. Range: 0.625-80 ng/mL

1x10⁶ HeLa cells were intracellularly stained with 0.25 ug SUN2 Recombinant antibody (85103-3-RR, Clone:242533G3) and CoraLite@488-Conjugated Goat Anti-Rabbit IgG(H+L) (SA00013-2)(red), or 0.25 ug Rabbit IgG Isotype Control RecAb (98136-1-RR, Clone: 240953C9) (blue). Cells were fixed and permeabilized with Transcription Factor Staining Buffer Kit (PF00011). This data was developed using the same antibody clone with 85103-3-PBS in a different storage buffer



Biolayer interferometry (BLI) kinetic assays of 85103-3-RR against Human SUN2 were performed. The affinity constant is 23.7 pM.

Cytometric bead array standard curve of MP01849-2, SUN2 Recombinant Matched Antibody Pair, PBS Only. Capture antibody: 85103-3-PBS. Detection antibody: 85103-2-PBS. Standard: Ag16077. Range: 1.25-80 ng/mL