

For Research Use Only

SYTL5 Recombinant antibody, PBS Only

Catalog Number: 85108-5-PBS



Basic Information

Catalog Number:

85108-5-PBS

Size:

100ug, Concentration: 1 mg/ml by Nanodrop;

Source:

Rabbit

Isotype:

IgG

Immunogen Catalog Number:

AG21698

GenBank Accession Number:

BC131585

GeneID (NCBI):

94122

UNIPROT ID:

Q8TDW5

Full Name:

synaptotagmin-like 5

Calculated MW:

730 aa, 81 kDa

Observed MW:

82 kDa

Purification Method:

Protein A purification

CloneNo.:

242838D12

Applications

Tested Applications:

WB, IF-P, Indirect ELISA

Species Specificity:

human, rat

Background Information

SYTL5, also known as SLP5, is a member of the synaptotagmin-like protein (Slp) family. Members of this family are characterized by the presence of an N-terminal Slp homology domain (SHD), which functions as a Rab27-binding domain, and C-terminal tandem C2 domains, putative Ca(2+)-binding motifs. SYTL5 promotes the development and progression of papillary thyroid carcinoma (PTC) by activating the NF- κ B signaling pathway (PMID: 36378561).

Storage

Storage:

Store at -80°C.

Storage Buffer:

PBS Only

For technical support and original validation data for this product please contact:

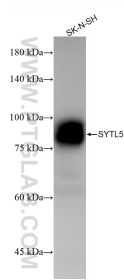
T: 1 (888) 4PTGLAB (1-888-478-4522) (toll free in USA), or 1(312) 455-8498 (outside USA)

E: proteintech@ptglab.com

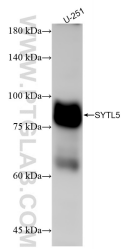
W: ptglab.com

This product is exclusively available under Proteintech Group brand and is not available to purchase from any other manufacturer.

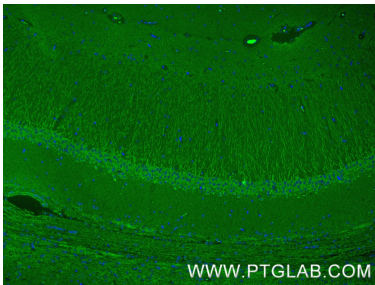
Selected Validation Data



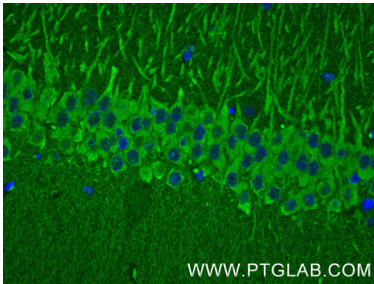
SK-N-SH cells were subjected to SDS PAGE followed by western blot with 85108-5-RR (SYTL5 antibody) at dilution of 1:5000 incubated at room temperature for 1.5 hours. This data was developed using the same antibody clone with 85108-5-PBS in a different storage buffer formulation.



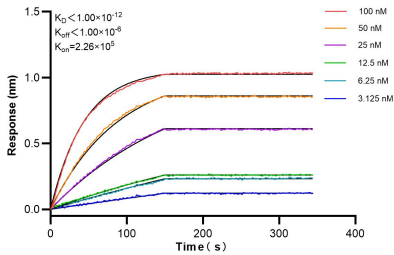
U-251 cells were subjected to SDS PAGE followed by western blot with 85108-5-RR (SYTL5 antibody) at dilution of 1:5000 incubated at room temperature for 1.5 hours. This data was developed using the same antibody clone with 85108-5-PBS in a different storage buffer formulation.



Immunofluorescent analysis of (4% PFA) fixed paraffin-embedded rat brain tissue using SYTL5 antibody (85108-5-RR, Clone: 242838D12) at dilution of 1:400 and CoraLite®488-Conjugated Goat Anti-Rabbit IgG(H+L) (SA00013-2). Heat mediated antigen retrieval with Tris-EDTA buffer (pH 9.0). This data was developed using the same antibody clone with 85108-5-PBS in a different storage buffer formulation.



Immunofluorescent analysis of (4% PFA) fixed paraffin-embedded rat brain tissue using SYTL5 antibody (85108-5-RR, Clone: 242838D12) at dilution of 1:400 and CoraLite®488-Conjugated Goat Anti-Rabbit IgG(H+L) (SA00013-2). Heat mediated antigen retrieval with Tris-EDTA buffer (pH 9.0). This data was developed using the same antibody clone with 85108-5-PBS in a different storage buffer formulation.



Biolayer interferometry (BLI) kinetic assays of 85108-5-RR against Human SYTL5 were performed. The affinity constant is below 1 pM.