

For Research Use Only

# SYTL5 Recombinant antibody

Catalog Number: 85108-5-RR



## Basic Information

<b>Catalog Number:</b> 85108-5-RR	<b>GenBank Accession Number:</b> BC131585	<b>Purification Method:</b> Protein A purification
<b>Size:</b> 100ul , Concentration: 1000 µg/ml by Nanodrop;	<b>GeneID (NCBI):</b> 94122	<b>CloneNo.:</b> 242838D12
<b>Source:</b> Rabbit	<b>UNIPROT ID:</b> Q8TDW5	<b>Recommended Dilutions:</b> WB 1:2000-1:10000 IF-P 1:200-1:800
<b>Isotype:</b> IgG	<b>Full Name:</b> synaptotagmin-like 5	
<b>Immunogen Catalog Number:</b> AG21698	<b>Calculated MW:</b> 730 aa, 81 kDa	
	<b>Observed MW:</b> 82 kDa	

## Applications

<b>Tested Applications:</b> WB, IF-P, ELISA	<b>Positive Controls:</b>
<b>Species Specificity:</b> human, rat	<b>WB :</b> SK-N-SH cells, U-251 cells <b>IF-P :</b> rat brain tissue,

## Background Information

SYTL5, also known as SLP5, is a member of the synaptotagmin-like protein (Slp) family. Members of this family are characterized by the presence of an N-terminal Slp homology domain (SHD), which functions as a Rab27-binding domain, and C-terminal tandem C2 domains, putative Ca(2+)-binding motifs. SYTL5 promotes the development and progression of papillary thyroid carcinoma (PTC) by activating the NF-κB signaling pathway (PMID: 36378561).

## Storage

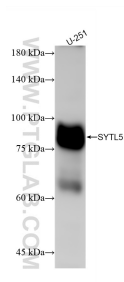
**Storage:**  
Store at -20°C. Stable for one year after shipment.  
**Storage Buffer:**  
PBS with 0.02% sodium azide and 50% glycerol pH 7.3.  
**Aliquoting is unnecessary for -20°C storage**

\*\*\* 20ul sizes contain 0.1% BSA

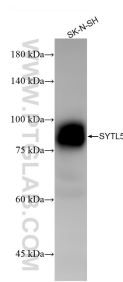
For technical support and original validation data for this product please contact:  
T: 1 (888) 4PTGLAB (1-888-478-4522) (toll free in USA), or 1(312) 455-8498 (outside USA)  
E: proteintech@ptglab.com  
W: ptglab.com

This product is exclusively available under Proteintech Group brand and is not available to purchase from any other manufacturer.

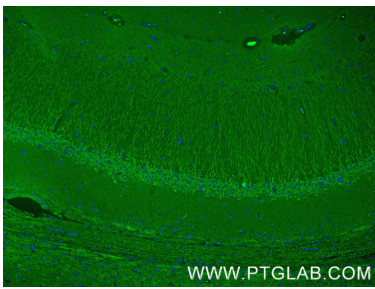
Selected Validation Data



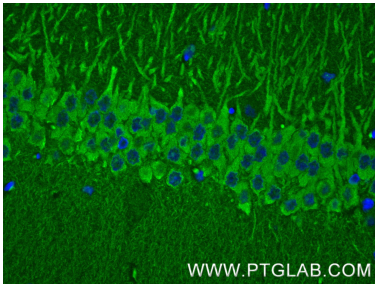
U-251 cells were subjected to SDS PAGE followed by western blot with 85108-5-RR (SYTL5 antibody) at dilution of 1:5000 incubated at room temperature for 1.5 hours.



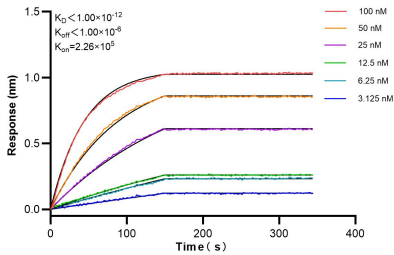
SK-N-SH cells were subjected to SDS PAGE followed by western blot with 85108-5-RR (SYTL5 antibody) at dilution of 1:5000 incubated at room temperature for 1.5 hours.



Immunofluorescent analysis of (4% PFA) fixed paraffin-embedded rat brain tissue using SYTL5 antibody (85108-5-RR, Clone: 242838D12 ) at dilution of 1:400 and CoraLite®488-Conjugated Goat Anti-Rabbit IgG(H+L) (SA00013-2). Heat mediated antigen retrieval with Tris-EDTA buffer (pH 9.0).



Immunofluorescent analysis of (4% PFA) fixed paraffin-embedded rat brain tissue using SYTL5 antibody (85108-5-RR, Clone: 242838D12 ) at dilution of 1:400 and CoraLite®488-Conjugated Goat Anti-Rabbit IgG(H+L) (SA00013-2). Heat mediated antigen retrieval with Tris-EDTA buffer (pH 9.0).



Biolayer interferometry (BLI) kinetic assays of 85108-5-RR against Human SYTL5 were performed. The affinity constant is below 1 pM.