

For Research Use Only

# MRPL11 Recombinant antibody, PBS Only

Catalog Number: 85109-5-PBS



## Basic Information

Catalog Number:

85109-5-PBS

Size:

100ug , Concentration: 1 mg/ml by Nanodrop;

Source:

Rabbit

Isotype:

IgG

Immunogen Catalog Number:

AG7899

GenBank Accession Number:

BC005002

GeneID (NCBI):

65003

UNIPROT ID:

Q9Y3B7

Full Name:

mitochondrial ribosomal protein L11

Calculated MW:

21 kDa

Observed MW:

21 kDa

Purification Method:

Protein A purification

CloneNo.:

242768G7

## Applications

Tested Applications:

WB, Indirect ELISA

Species Specificity:

human

## Storage

Storage:

Store at -80°C.

Storage Buffer:

PBS only, pH7.3

For technical support and original validation data for this product please contact:

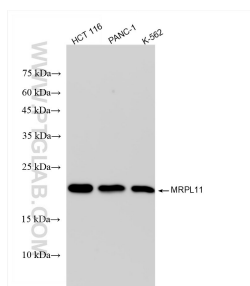
T: 1 (888) 4PTGLAB (1-888-478-4522) (toll free in USA), or 1(312) 455-8498 (outside USA)

E: [proteintech@ptglab.com](mailto:proteintech@ptglab.com)

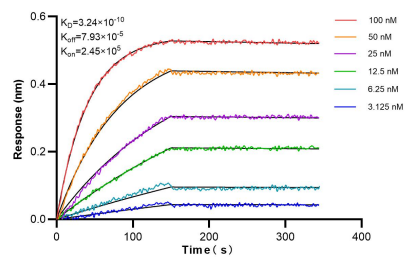
W: [ptglab.com](http://ptglab.com)

This product is exclusively available under Proteintech Group brand and is not available to purchase from any other manufacturer.

## Selected Validation Data



Various lysates were subjected to SDS PAGE followed by western blot with 85109-5-RR (MRPL11 antibody) at dilution of 1:2000 incubated at room temperature for 1.5 hours. This data was developed using the same antibody clone with 85109-5-PBS in a different storage buffer formulation.



Biolayer interferometry (BLI) kinetic assays of 85109-5-RR against Human MRPL11 were performed. The affinity constant is 0.324 nM.