

For Research Use Only

# SEC13 Recombinant antibody

Catalog Number: 85110-4-RR



## Basic Information

Catalog Number:

85110-4-RR

Size:

100ul, Concentration: 1000 µg/ml by Nanodrop;

Source:

Rabbit

Isotype:

IgG

Immunogen Catalog Number:

AG7610

GenBank Accession Number:

BC002634

GeneID (NCBI):

6396

UNIPROT ID:

P55735

Full Name:

SEC13 homolog (S. cerevisiae)

Calculated MW:

36 kDa

Observed MW:

36 kDa

Purification Method:

Protein A purification

CloneNo.:

242775C3

Recommended Dilutions:

WB 1:5000-1:50000

IF/ICC 1:200-1:800

## Applications

Tested Applications:

WB, IF/ICC, ELISA

Species Specificity:

human, mouse, rat

Positive Controls:

WB : LNCaP cells, HEK-293 cells, HepG2 cells, A431 cells, RAW 264.7 cells, mouse pancreas tissue, rat pancreas tissue

IF/ICC : HepG2 cells,

## Background Information

SEC13 is a component of the nuclear pore complex (NPC) and the COPII coat. It is required for vesicle biogenesis from endoplasmic reticulum during the transport of proteins. Shuttling of SEC13 between the nucleus and the cytoplasm may couple and regulate functions between these two compartments. (PMID: 14517296; 16407955)

## Storage

Storage:

Store at -20°C. Stable for one year after shipment.

Storage Buffer:

PBS with 0.02% sodium azide and 50% glycerol, pH7.3

Aliquoting is unnecessary for -20°C storage

\*\*\* 20ul sizes contain 0.1% BSA

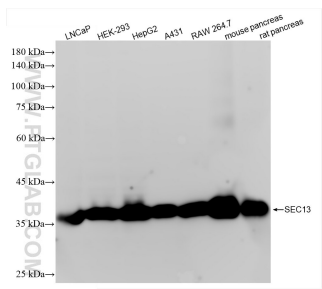
For technical support and original validation data for this product please contact:

T: 1 (888) 4PTGLAB (1-888-478-4522) (toll free in USA), or 1(312) 455-8498 (outside USA)

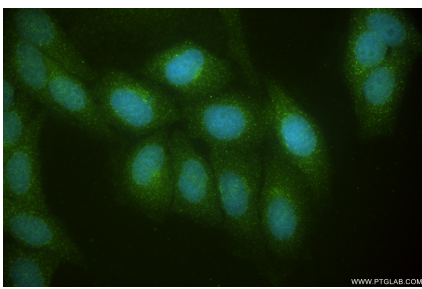
E: [proteintech@ptglab.com](mailto:proteintech@ptglab.com)  
W: [ptglab.com](http://ptglab.com)

This product is exclusively available under Proteintech Group brand and is not available to purchase from any other manufacturer.

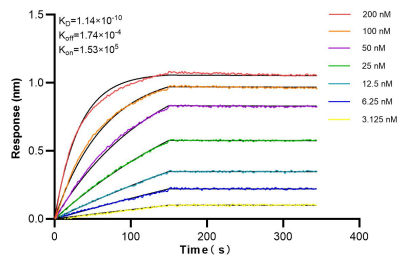
## Selected Validation Data



Various lysates were subjected to SDS PAGE followed by western blot with 85110-4-RR (SEC13 antibody) at dilution of 1:10000 incubated at room temperature for 1.5 hours.



Immunofluorescent analysis of (-20°C Ethanol) fixed HepG2 cells using SEC13 antibody (85110-4-RR, Clone: 242775C3) at dilution of 1:400 and CoraLite® 488-Conjugated Goat Anti-Rabbit IgG(H+L) (SA00013-2).



Biolayer interferometry (BLI) kinetic assays of 85110-4-RR against Human SEC13 were performed. The affinity constant is 0.114 nM.