

For Research Use Only

SELL Recombinant antibody, PBS Only (Capture/Detector)

Catalog Number: 85111-1-PBS



Basic Information

Catalog Number: 85111-1-PBS	GenBank Accession Number: NM_000655.5	Purification Method: Protein A purification
Size: 100ug , Concentration: 1 mg/ml by Nanodrop;	GeneID (NCBI): 6402	CloneNo.: 242283A4
Source: Rabbit	ENSEMBL Gene ID: ENSG00000188404	
Isotype: IgG	UNIPROT ID: P14151-1	
	Full Name: selectin L	
	Calculated MW: 42 kDa	

Applications

Tested Applications:
Cytometric bead array, Sandwich ELISA, Indirect ELISA, Sample test

Species Specificity:
human

Product Information

85111-1-PBS targets SELL as part of a matched antibody pair:

MP01864-2: 85111-1-PBS capture and 85111-3-PBS detection (validated in Cytometric bead array)

MP01864-3: 85111-3-PBS capture and 85111-1-PBS detection (validated in Sandwich ELISA)

Unconjugated rabbit recombinant monoclonal antibody in PBS only (BSA and azide free) storage buffer at a concentration of 1 mg/mL, ready for conjugation. Created using Proteintech's proprietary in-house recombinant technology. Recombinant production enables unrivalled batch-to-batch consistency, easy scale-up, and future security of supply.

This conjugation ready format makes antibodies ideal for use in many applications including: ELISAs, multiplex assays requiring matched pairs, mass cytometry, and multiplex imaging applications. Antibody use should be optimized by the end user for each application and assay.

Storage

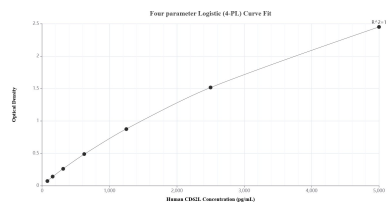
Storage:
Store at -80°C.

Storage Buffer:
PBS Only

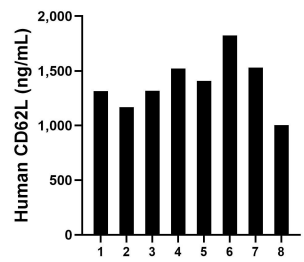
For technical support and original validation data for this product please contact:
T: 1 (888) 4PTGLAB (1-888-478-4522) (toll free in USA), or 1(312) 455-8498 (outside USA) E: proteintech@ptglab.com W: ptglab.com

This product is exclusively available under Proteintech Group brand and is not available to purchase from any other manufacturer.

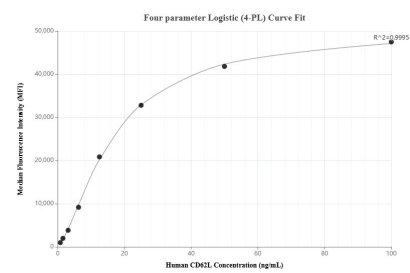
Selected Validation Data



Sandwich ELISA standard curve of MP01864-3, Human CD62L Recombinant Matched Antibody Pair - PBS only. 85111-3-PBS was coated to a plate as the capture antibody and incubated with serial dilutions of standard Eg3006. 85111-1-PBS was HRP conjugated as the detection antibody. Range: 78.1-5000 pg/mL.



Serum of eight individual healthy human donors was measured. The CD62L concentration of detected samples was determined to be 1,385.8 pg/mL with a range of 1,003.9-1,823.7 pg/mL.



Cytometric bead array standard curve of MP01864-2, CD62L Recombinant Matched Antibody Pair, PBS Only. Capture antibody: 85111-1-PBS. Detection antibody: 85111-3-PBS. Standard: Eg3006. Range: 0.781-100 ng/mL.