

For Research Use Only

# SELL Recombinant antibody, PBS Only (Capture/Detector)

Catalog Number: 85111-3-PBS



## Basic Information

**Catalog Number:**

85111-3-PBS

**Size:**

100ug, Concentration: 1 mg/ml by Nanodrop;

**Source:**

Rabbit

**Isotype:**

IgG

**GenBank Accession Number:**

NM\_000655.5

**GeneID (NCBI):**

6402

**ENSEMBL Gene ID:**

ENSG00000188404

**UNIPROT ID:**

P14151-1

**Full Name:**

selectin L

**Calculated MW:**

42 kDa

**Purification Method:**

Protein A purification

**CloneNo.:**

242283F9

## Applications

**Tested Applications:**

Cytometric bead array, Sandwich ELISA, Indirect ELISA, Sample test

**Species Specificity:**

human

## Product Information

85111-3-PBS targets SELL as part of a matched antibody pair:

MP01864-1: 85111-2-PBS capture and 85111-3-PBS detection (validated in Cytometric bead array)

MP01864-2: 85111-1-PBS capture and 85111-3-PBS detection (validated in Cytometric bead array)

MP01864-3: 85111-3-PBS capture and 85111-1-PBS detection (validated in Sandwich ELISA)

Unconjugated rabbit recombinant monoclonal antibody in PBS only (BSA and azide free) storage buffer at a concentration of 1 mg/mL, ready for conjugation. Created using Proteintech's proprietary in-house recombinant technology. Recombinant production enables unrivalled batch-to-batch consistency, easy scale-up, and future security of supply.

This conjugation ready format makes antibodies ideal for use in many applications including: ELISAs, multiplex assays requiring matched pairs, mass cytometry, and multiplex imaging applications. Antibody use should be optimized by the end user for each application and assay.

## Storage

**Storage:**

Store at -80°C.

**Storage Buffer:**

PBS Only

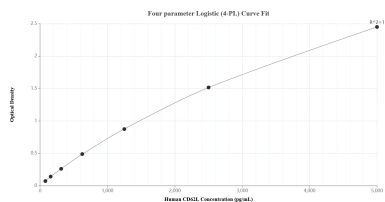
For technical support and original validation data for this product please contact:

T: 1 (888) 4PTGLAB (1-888-478-4522) (toll free in USA), or 1(312) 455-8498 (outside USA)

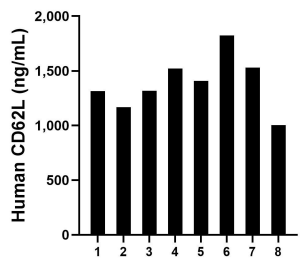
E: [proteintech@ptglab.com](mailto:proteintech@ptglab.com)  
W: [ptglab.com](http://ptglab.com)

This product is exclusively available under Proteintech Group brand and is not available to purchase from any other manufacturer.

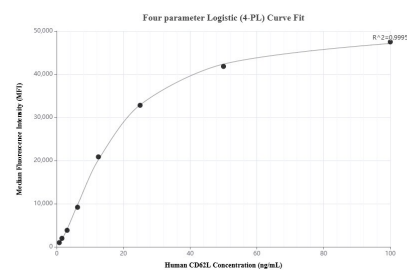
## Selected Validation Data



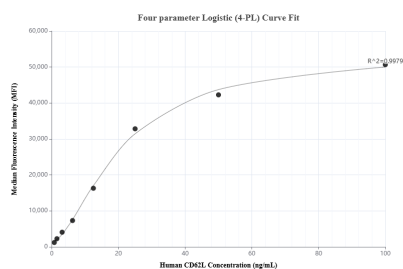
Sandwich ELISA standard curve of MP01864-3, Human CD62L Recombinant Matched Antibody Pair - PBS only. 85111-3-PBS was coated to a plate as the capture antibody and incubated with serial dilutions of standard Eg3006. 85111-1-PBS was HRP conjugated as the detection antibody. Range: 78.1-5000 pg/mL.



Serum of eight individual healthy human donors was measured. The CD62L concentration of detected samples was determined to be 1,385.8 pg/mL with a range of 1,003.9-1,823.7 pg/mL.



Cytometric bead array standard curve of MP01864-2, CD62L Recombinant Matched Antibody Pair, PBS Only. Capture antibody: 85111-1-PBS. Detection antibody: 85111-3-PBS. Standard: Eg3006. Range: 0.781-100 ng/mL.



Cytometric bead array standard curve of MP01864-1, CD62L Recombinant Matched Antibody Pair, PBS Only. Capture antibody: 85111-2-PBS. Detection antibody: 85111-3-PBS. Standard: Eg3006. Range: 0.781-100 ng/mL.