

For Research Use Only

CD62L Recombinant antibody

Catalog Number: 85111-6-RR



Basic Information

Catalog Number: 85111-6-RR	GenBank Accession Number: NM_000655.5	Purification Method: Protein A purification
Size: 100ul , Concentration: 1000 µg/ml by Nanodrop;	GeneID (NCBI): 6402	CloneNo.: 250646B2
Source: Rabbit	ENSEMBL Gene ID: ENSG00000188404	Recommended Dilutions: WB: 1:500-1:2000
Isotype: IgG	UNIPROT ID: P14151-1	
Immunogen Catalog Number: EG3006	Full Name: selectin L	
	Calculated MW: 42 kDa	
	Observed MW: 65 kDa	

Applications

Tested Applications: WB, ELISA	Positive Controls: WB : Jurkat cells, MJ cells
Species Specificity: human	

Background Information

CD62L, also known as L-selectin or SELP, is a member of the selectin family of adhesion molecules that also include CD62E (E-selectin) and CD62P (P-selectin) (PMID: 2663882, 2473156, 1382078). CD62L is a highly glycosylated protein expressed on the surface of most leukocytes, including lymphocytes, neutrophils, monocytes, eosinophils, hematopoietic progenitor cells, and immature thymocytes (PMID: 1694883, 1688580). It mediates the binding of lymphocytes to high endothelial venules (HEV) of peripheral lymph nodes through interactions with a constitutively expressed ligand, and is also involved in lymphocyte, neutrophil, and monocyte attachment to endothelium at sites of inflammation (PMID: 1382078).

Storage

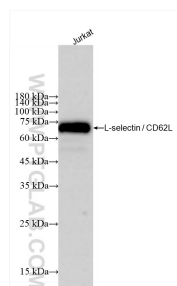
Storage:
Store at -20°C. Stable for one year after shipment.
Storage Buffer:
PBS with 0.02% sodium azide and 50% glycerol, pH7.3
Aliquoting is unnecessary for -20°C storage

*** 20ul sizes contain 0.1% BSA

For technical support and original validation data for this product please contact:
T: 1 (888) 4PTGLAB (1-888-478-4522) (toll free in USA), or 1(312) 455-8498 (outside USA)
E: proteintech@ptglab.com
W: ptglab.com

This product is exclusively available under Proteintech Group brand and is not available to purchase from any other manufacturer.

Selected Validation Data



Jurkat cells were subjected to SDS PAGE followed by western blot with 85111-6-RR (SELL antibody) at dilution of 1:1000 incubated at room temperature for 1.5 hours.