

For Research Use Only

# Progesterone Receptor Recombinant antibody

Catalog Number: 85112-4-RR



## Basic Information

<b>Catalog Number:</b> 85112-4-RR	<b>GenBank Accession Number:</b> NM_000926	<b>Purification Method:</b> Protein A purification
<b>Size:</b> 100ul , Concentration: 1000 µg/ml by Nanodrop;	<b>GeneID (NCBI):</b> 5241	<b>CloneNo.:</b> 242686G1
<b>Source:</b> Rabbit	<b>UNIPROT ID:</b> P06401	<b>Recommended Dilutions:</b> WB 1:5000-1:50000 IHC 1:500-1:2000 IF/ICC 1:500-1:2000
<b>Isotype:</b> IgG	<b>Full Name:</b> progesterone receptor	
<b>Immunogen Catalog Number:</b> AG22986	<b>Calculated MW:</b> 933 aa, 99 kDa	
	<b>Observed MW:</b> 118 kDa	

## Applications

**Tested Applications:**  
WB, IHC, IF/ICC, ELISA

**Species Specificity:**  
human

**Note-IHC:** suggested antigen retrieval with **TE buffer pH 9.0; (\*) Alternatively, antigen retrieval may be performed with citrate buffer pH 6.0**

**Positive Controls:**

**WB :** MCF-7 cells, T-47D cells

**IHC :** human cervical cancer tissue,

**IF/ICC :** T-47D cells, MCF-7 cells

## Background Information

PGR (Progesterone Receptor), also named as NR3C3 and PR, belongs to the nuclear hormone receptor family and NR3 subfamily. The steroid hormones and their receptors are involved in the regulation of eukaryotic gene expression and affect cellular proliferation and differentiation in target tissues. Progesterone receptor isoform B (PRB) is involved activation of c-SRC/MAPK signaling on hormone stimulation. The ER and PR status has been used as a predictor of breast carcinoma responsiveness to endocrine therapy and as a prognostic indicator for early recurrence.

## Storage

**Storage:**

Store at -20°C. Stable for one year after shipment.

**Storage Buffer:**

PBS with 0.02% sodium azide and 50% glycerol, pH7.3

**Aliquoting is unnecessary for -20°C storage**

**\*\*\* 20ul sizes contain 0.1% BSA**

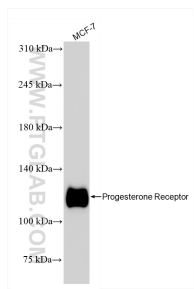
For technical support and original validation data for this product please contact:

T: 1 (888) 4PTGLAB (1-888-478-4522) (toll free in USA), or 1(312) 455-8498 (outside USA)

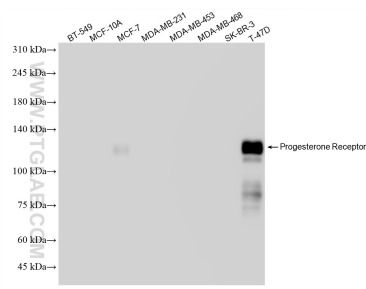
E: proteintech@ptglab.com  
W: ptglab.com

**This product is exclusively available under Proteintech Group brand and is not available to purchase from any other manufacturer.**

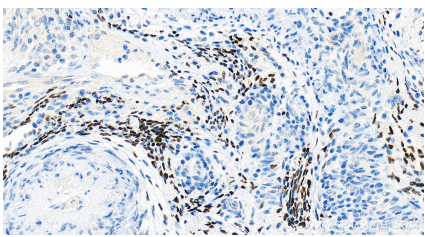
Selected Validation Data



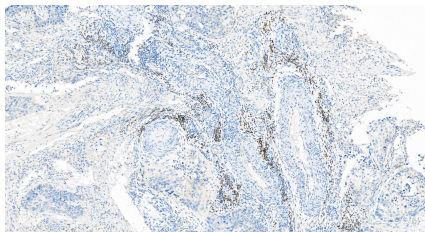
MCF-7 cells were subjected to SDS PAGE followed by western blot with 85112-4-RR (PR antibody) at dilution of 1:10000 incubated at room temperature for 1.5 hours.



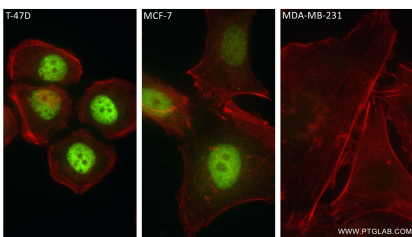
Various lysates were subjected to SDS PAGE followed by western blot with 85112-4-RR (Progesterone Receptor antibody) at dilution of 1:10000 incubated at room temperature for 1.5 hours.



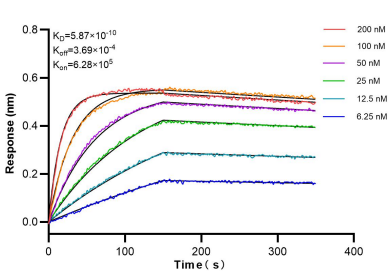
Immunohistochemical analysis of paraffin-embedded human cervical cancer tissue slide using 85112-4-RR (PR antibody) at dilution of 1:1000 (under 40x lens). Heat mediated antigen retrieval with Tris-EDTA buffer (pH 9.0).



Immunohistochemical analysis of paraffin-embedded human cervical cancer tissue slide using 85112-4-RR (PR antibody) at dilution of 1:1000 (under 10x lens). Heat mediated antigen retrieval with Tris-EDTA buffer (pH 9.0).



Immunofluorescent analysis of (4% PFA) fixed T-47D cells, MCF-7 cells, MDA-MB-231 cells using PR antibody (85112-4-RR, Clone: 242686G1 ) at dilution of 1:1000 and CoraLite®488-Conjugated Goat Anti-Rabbit IgG(H+L) (SA00013-2), CL594-Phalloidin (red).



Bilayer interferometry (BLI) kinetic assays of 85112-4-RR against Human Progesterone Receptor were performed. The affinity constant is 0.587 nM.