

For Research Use Only

ETS2 Recombinant antibody, PBS Only (Capture)

Catalog Number: 85113-4-PBS



Basic Information

Catalog Number: 85113-4-PBS	GenBank Accession Number: BC017040	Purification Method: Protein A purification
Size: 100ug , Concentration: 1 mg/ml by Nanodrop;	GeneID (NCBI): 2114	CloneNo.: 242817H8
Source: Rabbit	UNIPROT ID: P15036	
Isotype: IgG	Full Name: v-ets erythroblastosis virus E26 oncogene homolog 2 (avian)	
Immunogen Catalog Number: AG2929	Calculated MW: 469 aa, 53 kDa	

Applications

Tested Applications:
IF/ICC, FC (Intra), Sandwich ELISA, Indirect ELISA, Sample test

Species Specificity:
human

Product Information

85113-4-PBS targets ETS2 as part of a matched antibody pair:

MP01858-3: 85113-4-PBS capture and 85113-1-PBS detection (validated in Sandwich ELISA)

Unconjugated rabbit recombinant monoclonal antibody in PBS only (BSA and azide free) storage buffer at a concentration of 1 mg/mL, ready for conjugation. Created using Proteintech's proprietary in-house recombinant technology. Recombinant production enables unrivalled batch-to-batch consistency, easy scale-up, and future security of supply.

This conjugation ready format makes antibodies ideal for use in many applications including: ELISAs, multiplex assays requiring matched pairs, mass cytometry, and multiplex imaging applications. Antibody use should be optimized by the end user for each application and assay.

Storage

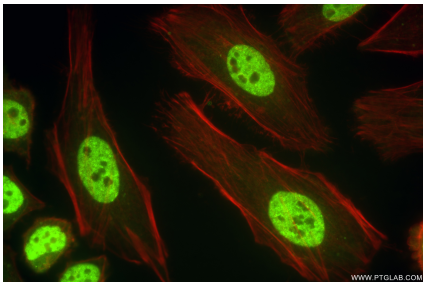
Storage:
Store at -80°C.

Storage Buffer:
PBS only, pH7.3

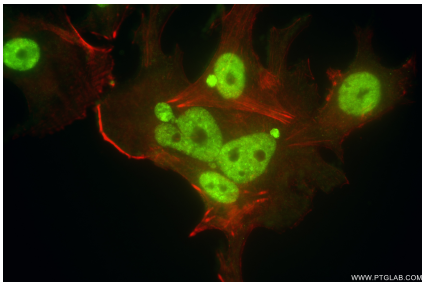
For technical support and original validation data for this product please contact:
T: 1 (888) 4PTGLAB (1-888-478-4522) (toll free in USA), or 1(312) 455-8498 (outside USA)
E: proteintech@ptglab.com
W: ptglab.com

This product is exclusively available under Proteintech Group brand and is not available to purchase from any other manufacturer.

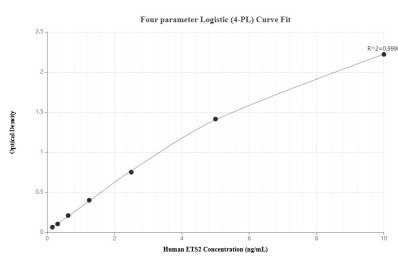
Selected Validation Data



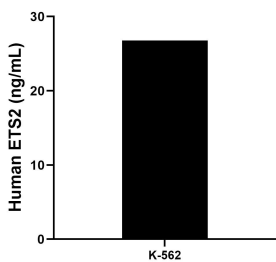
Immunofluorescent analysis of (4% PFA) fixed HeLa cells using ETS2 antibody (85113-4-RR, Clone: 242817H8) at dilution of 1:1000 and CoraLite@488-Conjugated Goat Anti-Rabbit IgG(H+L) (SA00013-2), CL594-Phalloidin (red). This data was developed using the same antibody clone with 85113-4-PBS in a different storage buffer formulation.



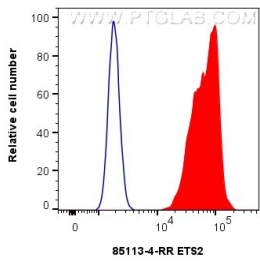
Immunofluorescent analysis of (4% PFA) fixed MCF-7 cells using ETS2 antibody (85113-4-RR, Clone: 242817H8) at dilution of 1:1000 and CoraLite@488-Conjugated Goat Anti-Rabbit IgG(H+L) (SA00013-2), CL594-Phalloidin (red). This data was developed using the same antibody clone with 85113-4-PBS in a different storage buffer formulation.



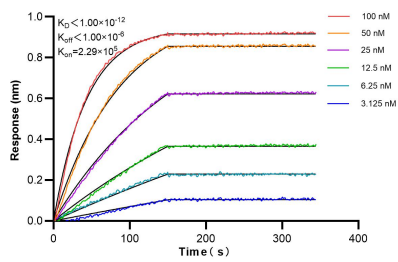
Sandwich ELISA standard curve of MP01858-3, Human ETS2 Recombinant Matched Antibody Pair - PBS only. 85113-4-PBS was coated to a plate as the capture antibody and incubated with serial dilutions of standard Ag2929. 85113-1-PBS was HRP conjugated as the detection antibody. Range: 0.156-10 ng/mL



The mean ETS2 concentration was determined to be 26.79 ng/mL in K-562 cell extract based on a 2.0 mg/mL extract load.



1x10⁶ MCF-7 cells were intracellularly stained with 0.25 ug ETS2 Recombinant antibody (85113-4-RR, Clone:242817H8) and CoraLite@488-Conjugated Goat Anti-Rabbit IgG(H+L) (SA00013-2)(red), or 0.25 ug Rabbit IgG Isotype Control RecAb (98136-1-RR, Clone: 240953C9) (blue). Cells were fixed and permeabilized with Transcription Factor Staining Buffer Kit (PF00011). This data was developed using the same antibody clone with 85113-4-PBS in a different storage



Bi-layer interferometry (BLI) kinetic assays of 85113-4-RR against Human ETS2 were performed. The affinity constant is below 1 pM.