

For Research Use Only

# HCLS1 Recombinant antibody, PBS Only (Capture)

Catalog Number: 85114-1-PBS



## Basic Information

<b>Catalog Number:</b> 85114-1-PBS	<b>GenBank Accession Number:</b> BC016758	<b>Purification Method:</b> Protein A purification
<b>Size:</b> 100ug , Concentration: 1 mg/ml by Nanodrop;	<b>GeneID (NCBI):</b> 3059	<b>CloneNo.:</b> 242825E4
<b>Source:</b> Rabbit	<b>UNIPROT ID:</b> P14317	
<b>Isotype:</b> IgG	<b>Full Name:</b> hematopoietic cell-specific Lyn substrate 1	
<b>Immunogen Catalog Number:</b> AG8645	<b>Calculated MW:</b> 486 aa, 54 kDa	
	<b>Observed MW:</b> 75 kDa	

## Applications

**Tested Applications:**  
WB, IF/ICC, Cytometric bead array, Sandwich ELISA, Indirect ELISA, Sample test

**Species Specificity:**  
human, mouse, rat

## Product Information

85114-1-PBS targets HCLS1 as part of a matched antibody pair:

MP01860-1: 85114-1-PBS capture and 85114-2-PBS detection (validated in Cytometric bead array, Sandwich ELISA)

MP01860-2: 85114-1-PBS capture and 85114-3-PBS detection (validated in Cytometric bead array)

Unconjugated rabbit recombinant monoclonal antibody in PBS only (BSA and azide free) storage buffer at a concentration of 1 mg/mL, ready for conjugation. Created using Proteintech's proprietary in-house recombinant technology. Recombinant production enables unrivalled batch-to-batch consistency, easy scale-up, and future security of supply.

This conjugation ready format makes antibodies ideal for use in many applications including: ELISAs, multiplex assays requiring matched pairs, mass cytometry, and multiplex imaging applications. Antibody use should be optimized by the end user for each application and assay.

## Background Information

Hematopoietic cell-specific Lyn substrate 1 (HS1, HCLS1, LckBP1 and p75) is a 75-kDa intracellular protein expressed in cells of lymphohematopoietic origin. It was originally identified in B-lymphocytes as a major substrate of B-cell receptor (BCR)-induced phosphorylation after antigen (Ag) stimulation. It's a substrate of the antigen receptor-coupled tyrosine kinase. HCLS1 plays a role in antigen receptor signaling for both clonal expansion and deletion in lymphoid cells.

## Storage

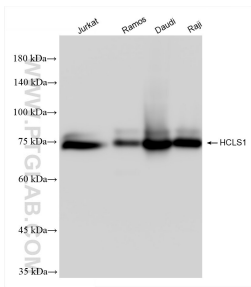
**Storage:**  
Store at -80°C.

**Storage Buffer:**  
PBS only

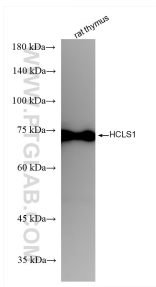
For technical support and original validation data for this product please contact:  
T: 1 (888) 4PTGLAB (1-888-478-4522) (toll free in USA), or 1(312) 455-8498 (outside USA)  
E: [proteintech@ptglab.com](mailto:proteintech@ptglab.com)  
W: [ptglab.com](http://ptglab.com)

This product is exclusively available under Proteintech Group brand and is not available to purchase from any other manufacturer.

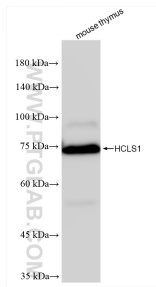
## Selected Validation Data



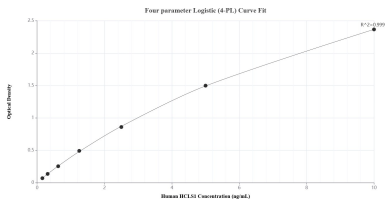
Various lysates were subjected to SDS PAGE followed by western blot with 85114-1-RR (HCLS1 antibody) at dilution of 1:10000 incubated at room temperature for 1.5 hours. This data was developed using the same antibody clone with 85114-1-PBS in a different storage buffer formulation.



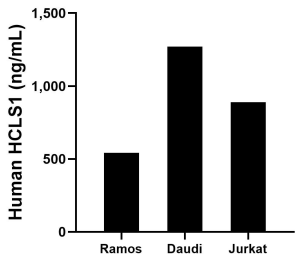
rat thymus tissue were subjected to SDS PAGE followed by western blot with 85114-1-RR (HCLS1 antibody) at dilution of 1:10000 incubated at room temperature for 1.5 hours. This data was developed using the same antibody clone with 85114-1-PBS in a different storage buffer formulation.



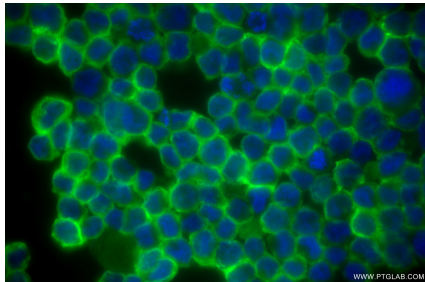
mouse thymus tissue were subjected to SDS PAGE followed by western blot with 85114-1-RR (HCLS1 antibody) at dilution of 1:10000 incubated at room temperature for 1.5 hours. This data was developed using the same antibody clone with 85114-1-PBS in a different storage buffer formulation.



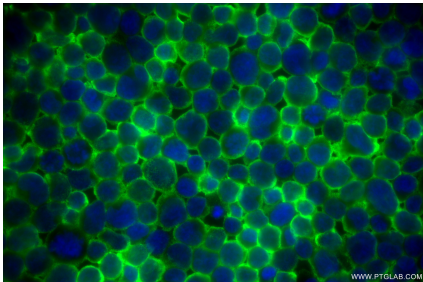
Sandwich ELISA standard curve of MP01860-1, Human HCLS1 Recombinant Matched Antibody Pair - PBS only. 85114-1-PBS was coated to a plate as the capture antibody and incubated with serial dilutions of standard Ag8645. 85114-2-PBS was HRP conjugated as the detection antibody. Range: 0.156-10 ng/mL.



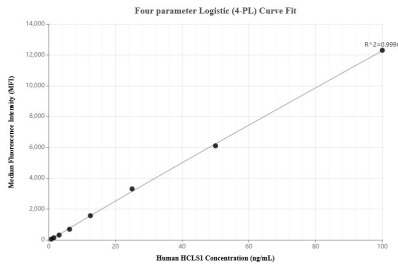
The mean HCLS1 concentration was determined to be 541.92 ng/mL in Ramos cell extract based on a 1.40 mg/mL extract load, 1,269.82 ng/mL in Daudi cell extract based on a 3.60 mg/mL extract load and 889.93 ng/mL in Jurkat cell extract based on a 3.10 mg/mL extract load.



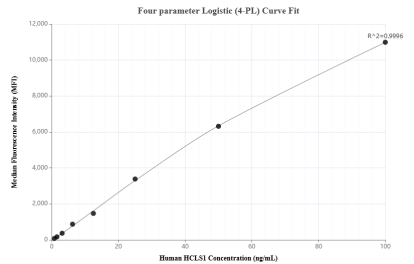
Immunofluorescent analysis of (4% PFA) fixed HEL cells using HCLS1 antibody (85114-1-RR, Clone: 242825E4 ) at dilution of 1:400 and CoraLite@488-Conjugated Goat Anti-Rabbit IgG(H+L) (SA00013-2). This data was developed using the same antibody clone with 85114-1-PBS in a different storage buffer formulation.



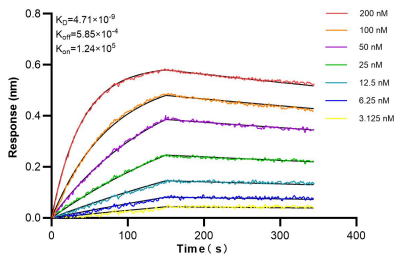
Immunofluorescent analysis of (4% PFA) fixed Jurkat cells using HCLS1 antibody (85114-1-RR, Clone: 242825E4 ) at dilution of 1:400 and CoraLite@488-Conjugated Goat Anti-Rabbit IgG(H+L) (SA00013-2). This data was developed using the same antibody clone with 85114-1-PBS in a different storage buffer formulation.



Cytometric bead array standard curve of MP01860-1, HCLS1 Recombinant Matched Antibody Pair, PBS Only. Capture antibody: 85114-1-PBS. Detection antibody: 85114-2-PBS. Standard: Ag8645. Range: 0.781-100 ng/mL.



Cytometric bead array standard curve of MP01860-2, HCLS1 Recombinant Matched Antibody Pair, PBS Only. Capture antibody: 85114-1-PBS. Detection antibody: 85114-3-PBS. Standard: Ag8645. Range: 0.781-100 ng/mL.



Biolayer interferometry (BLI) kinetic assays of 85114-1-RR against Human HCLS1 were performed. The affinity constant is 4.71 nM.