

For Research Use Only

HCLS1 Recombinant antibody

Catalog Number: 85114-1-RR



Basic Information

Catalog Number: 85114-1-RR	GenBank Accession Number: BC016758	Purification Method: Protein A purification
Size: 100ul , Concentration: 1000 µg/ml by Nanodrop;	GeneID (NCBI): 3059	CloneNo.: 242825E4
Source: Rabbit	UNIPROT ID: P14317	Recommended Dilutions: WB 1:5000-1:50000 IF/ICC 1:200-1:800
Isotype: IgG	Full Name: hematopoietic cell-specific Lyn substrate 1	
Immunogen Catalog Number: AG8645	Calculated MW: 486 aa, 54 kDa	
	Observed MW: 75 kDa	

Applications

Tested Applications: WB, IF/ICC, ELISA	Positive Controls:
Species Specificity: human, mouse, rat	WB : Jurkat cells, mouse thymus tissue, rat thymus tissue, Ramos cells, Daudi cells, Raji cells IF/ICC : HEL cells, Jurkat cells

Background Information

Hematopoietic cell-specific Lyn substrate 1 (HS1, HCLS1, LckBP1 and p75) is a 75-kDa intracellular protein expressed in cells of lymphohemopoietic origin. It was originally identified in B-lymphocytes as a major substrate of B-cell receptor (BCR)-induced phosphorylation after antigen (Ag) stimulation. It's a substrate of the antigen receptor-coupled tyrosine kinase. HCLS1 plays a role in antigen receptor signaling for both clonal expansion and deletion in lymphoid cells.

Storage

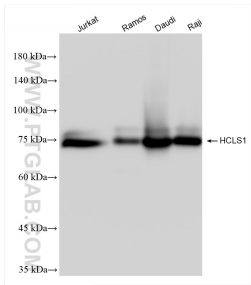
Storage:
Store at -20°C. Stable for one year after shipment.
Storage Buffer:
PBS with 0.02% sodium azide and 50% glycerol pH 7.3.
Aliquoting is unnecessary for -20°C storage

*** 20ul sizes contain 0.1% BSA

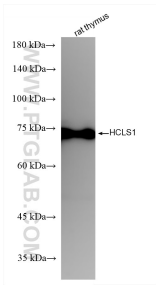
For technical support and original validation data for this product please contact:
T: 1 (888) 4PTGLAB (1-888-478-4522) (toll free in USA), or 1(312) 455-8498 (outside USA)
E: proteintech@ptglab.com
W: ptglab.com

This product is exclusively available under Proteintech Group brand and is not available to purchase from any other manufacturer.

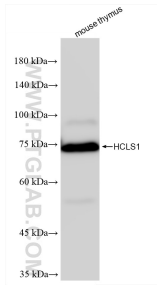
Selected Validation Data



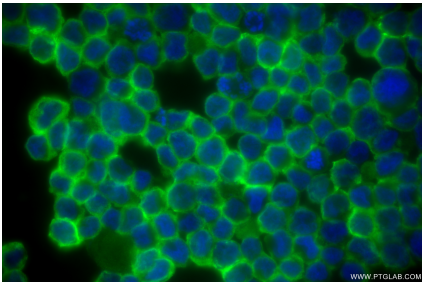
Various lysates were subjected to SDS PAGE followed by western blot with 85114-1-RR (HCLS1 antibody) at dilution of 1:10000 incubated at room temperature for 1.5 hours.



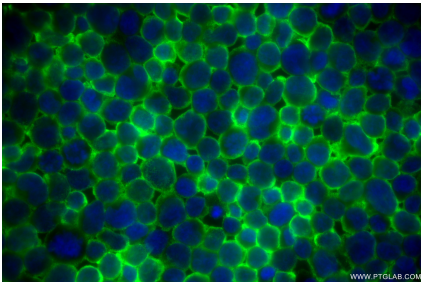
rat thymus tissue were subjected to SDS PAGE followed by western blot with 85114-1-RR (HCLS1 antibody) at dilution of 1:10000 incubated at room temperature for 1.5 hours.



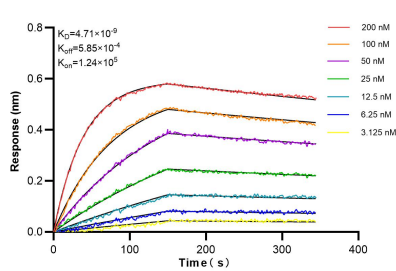
mouse thymus tissue were subjected to SDS PAGE followed by western blot with 85114-1-RR (HCLS1 antibody) at dilution of 1:10000 incubated at room temperature for 1.5 hours.



Immunofluorescent analysis of (4% PFA) fixed HEL cells using HCLS1 antibody (85114-1-RR, Clone: 242825E4) at dilution of 1:400 and CoraLite® 488-Conjugated Goat Anti-Rabbit IgG(H+L) (SA00013-2).



Immunofluorescent analysis of (4% PFA) fixed Jurkat cells using HCLS1 antibody (85114-1-RR, Clone: 242825E4) at dilution of 1:400 and CoraLite® 488-Conjugated Goat Anti-Rabbit IgG(H+L) (SA00013-2).



Bilayer interferometry (BLI) kinetic assays of 85114-1-RR against Human HCLS1 were performed. The affinity constant is 4.71 nM.