

For Research Use Only

TPX2 Recombinant antibody, PBS Only (Capture/Detector)

Catalog Number: 85118-3-PBS



Basic Information

| | | |
|---|---|---|
| Catalog Number: 85118-3-PBS | GenBank Accession Number: BC020207 | Purification Method: Protein A purification |
| Size: 100ug , Concentration: 1 mg/ml by Nanodrop; | GeneID (NCBI): 22974 | CloneNo.: 242528F9 |
| Source: Rabbit | UNIPROT ID: Q9ULW0 | |
| Isotype: IgG | Full Name: TPX2, microtubule-associated, homolog (Xenopus laevis) | |
| Immunogen Catalog Number: AG2334 | Calculated MW: 747 aa, 86 kDa | |

Applications

Tested Applications:
Cytometric bead array, Sandwich ELISA, Indirect ELISA, Sample test

Species Specificity:
human

Product Information

85118-3-PBS targets TPX2 as part of a matched antibody pair:

MP01821-1: 85118-2-PBS capture and 85118-3-PBS detection (validated in Cytometric bead array)

MP01821-2: 85118-1-PBS capture and 85118-3-PBS detection (validated in Cytometric bead array)

MP01821-3: 85118-3-PBS capture and 85118-4-PBS detection (validated in Sandwich ELISA)

Unconjugated rabbit recombinant monoclonal antibody in PBS only (BSA and azide free) storage buffer at a concentration of 1 mg/mL, ready for conjugation. Created using Proteintech's proprietary in-house recombinant technology. Recombinant production enables unrivalled batch-to-batch consistency, easy scale-up, and future security of supply.

This conjugation ready format makes antibodies ideal for use in many applications including: ELISAs, multiplex assays requiring matched pairs, mass cytometry, and multiplex imaging applications. Antibody use should be optimized by the end user for each application and assay.

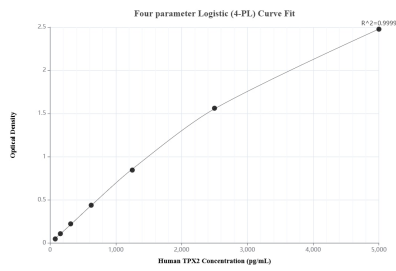
Storage

Storage:
Store at -80°C.
Storage Buffer:
PBS Only

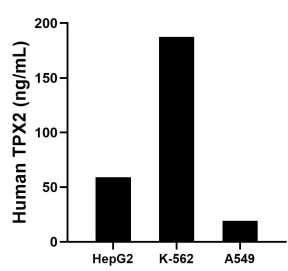
For technical support and original validation data for this product please contact:
T: 1 (888) 4PTGLAB (1-888-478-4522) (toll free in USA), or 1(312) 455-8498 (outside USA)
E: proteintech@ptglab.com
W: ptglab.com

This product is exclusively available under Proteintech Group brand and is not available to purchase from any other manufacturer.

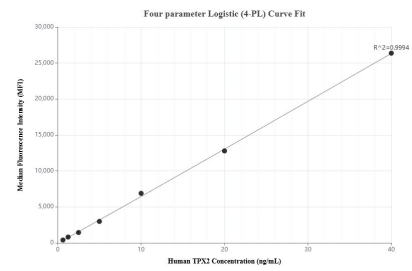
Selected Validation Data



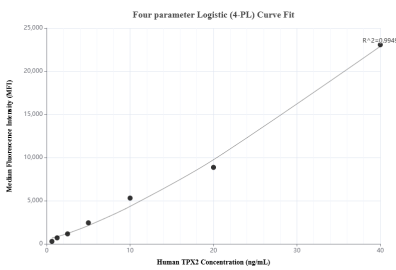
Sandwich ELISA standard curve of MP01821-3, Human TPX2 Recombinant Matched Antibody Pair - PBS only. 85118-3-PBS was coated to a plate as the capture antibody and incubated with serial dilutions of standard Ag2334. 85118-4-PBS was HRP conjugated as the detection antibody. Range: 78.1-5000 pg/mL



The mean TPX2 concentration was determined to be 59.0 ng/mL in HepG2 cell extract based on a 1.0 mg/mL extract load, 187.5 ng/mL in K-562 cell extract based on a 2.5 mg/mL extract load and 19.2 ng/mL in A549 cell extract based on a 1.5 mg/mL extract load.



Cytometric bead array standard curve of MP01821-1, TPX2 Recombinant Matched Antibody Pair, PBS Only. Capture antibody: 85118-2-PBS. Detection antibody: 85118-3-PBS. Standard: Ag2334. Range: 0.625-40 ng/mL



Cytometric bead array standard curve of MP01821-2, TPX2 Recombinant Matched Antibody Pair, PBS Only. Capture antibody: 85118-1-PBS. Detection antibody: 85118-3-PBS. Standard: Ag2334. Range: 0.625-40 ng/mL