

For Research Use Only

TPX2 Recombinant antibody

Catalog Number: 85118-6-RR



Basic Information

Catalog Number: 85118-6-RR	GenBank Accession Number: BC020207	Purification Method: Protein A purification
Size: 100ul , Concentration: 1000 µg/ml by Nanodrop;	GeneID (NCBI): 22974	CloneNo.: 242528G6
Source: Rabbit	UNIPROT ID: Q9ULW0	Recommended Dilutions: WB 1:5000-1:50000 IHC 1:200-1:800 IF/ICC 1:250-1:1000
Isotype: IgG	Full Name: TPX2, microtubule-associated, homolog (Xenopus laevis)	
Immunogen Catalog Number: AG2334	Calculated MW: 747 aa, 86 kDa	
	Observed MW: 100 kDa	

Applications

Tested Applications: WB, IHC, IF/ICC, FC (Intra), ELISA	Positive Controls: WB : HeLa cells, HepG2 cells, K-562 cells, SMMC-7721 cells, PANC-1 cells, NIH/3T3 cells IHC : human cervical cancer tissue, IF/ICC : HepG2 cells,
Species Specificity: human, mouse	
Note-IHC: suggested antigen retrieval with TE buffer pH 9.0; (*) Alternatively, antigen retrieval may be performed with citrate buffer pH 6.0	

Background Information

TPX2, also known as DIL2, p10, is a microtubule organization- and cell cycle-associated protein. In the early stage of mitosis, TPX2 is released in a RanGTP-dependent manner and plays a significant role in mitotic spindle formation and subsequent proper segregation of chromosomes during cell division. Furthermore, during interphase, TPX2 is involved in DNA damage response by regulation of γ -H2AX signals (PMID: 25914189). Aberrant expression of TPX2 leads to improper spindle assembly and chromosomal instability. Overexpressed in cancers, TPX2 is being established as the marker for the diagnosis and prognosis of malignancies (PMID: 24556998).

Storage

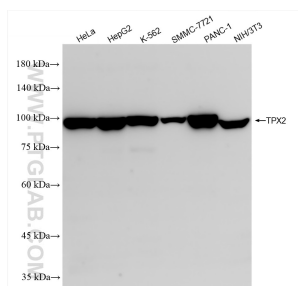
Storage:
Store at -20°C. Stable for one year after shipment.
Storage Buffer:
PBS with 0.02% sodium azide and 50% glycerol pH 7.3.
Aliquoting is unnecessary for -20°C storage

*** 20ul sizes contain 0.1% BSA

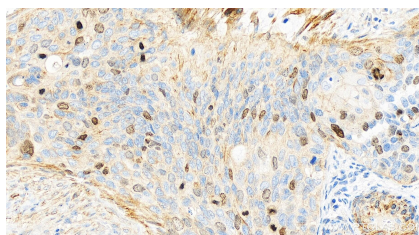
For technical support and original validation data for this product please contact:
T: 1 (888) 4PTGLAB (1-888-478-4522) (toll free in USA), or 1(312) 455-8498 (outside USA)
E: proteintech@ptglab.com
W: ptglab.com

This product is exclusively available under Proteintech Group brand and is not available to purchase from any other manufacturer.

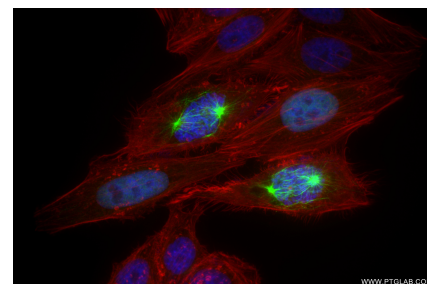
Selected Validation Data



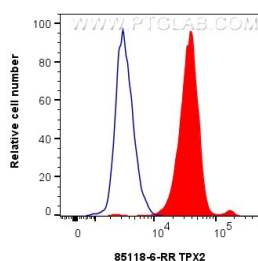
Various lysates were subjected to SDS PAGE followed by western blot with 85118-6-RR (TPX2 antibody) at dilution of 1:10000 incubated at room temperature for 1.5 hours.



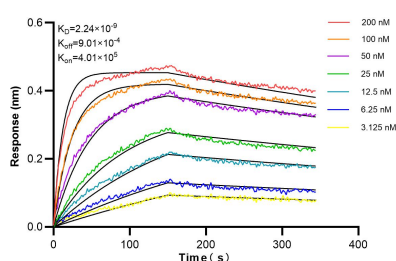
Immunohistochemical analysis of paraffin-embedded human cervical cancer tissue slide using 85118-6-RR (TPX2 antibody) at dilution of 1:400 (under 20x lens). Heat mediated antigen retrieval with Tris-EDTA buffer (pH 9.0).



Immunofluorescent analysis of (4% PFA) fixed HepG2 cells using TPX2 antibody (85118-6-RR, Clone: 242528G6) at dilution of 1:500 and CoraLite®488-Conjugated Goat Anti-Rabbit IgG(H+L) (SA00013-2), CL594-Phalloidin (red).



1x10⁶ HeLa cells were intracellularly stained with 0.25 ug TPX2 Recombinant antibody (85118-6-RR, Clone:242528G6) and CoraLite®488-Conjugated Goat Anti-Rabbit IgG(H+L) (SA00013-2)(red), or 0.25 ug Rabbit IgG Isotype Control RecAb (98136-1-RR, Clone: 240953C9) (blue). Cells were fixed and permeabilized with Transcription Factor Staining Buffer Kit (PF00011).



Biolayer interferometry (BLI) kinetic assays of 85118-6-RR against Human TPX2 were performed. The affinity constant is 2.24 nM.