

For Research Use Only

AKAP1 Recombinant antibody, PBS Only (Detector)

Catalog Number: 85119-2-PBS



Basic Information

Catalog Number: 85119-2-PBS	GenBank Accession Number: BC000729	Purification Method: Protein A purification
Size: 100ug , Concentration: 1 mg/ml by Nanodrop;	GeneID (NCBI): 8165	CloneNo.: 242763A5
Source: Rabbit	UNIPROT ID: Q92667	
Isotype: IgG	Full Name: A kinase (PRKA) anchor protein 1	
Immunogen Catalog Number: AG8037	Calculated MW: 97 kDa	
	Observed MW: 149 kDa	

Applications

Tested Applications:
WB, IF/ICC, FC (Intra), Cytometric bead array, Indirect ELISA

Species Specificity:
human

Product Information

85119-2-PBS targets AKAP1 as part of a matched antibody pair:

MP01840-1: 85119-3-PBS capture and 85119-2-PBS detection (validated in Cytometric bead array)

Unconjugated rabbit recombinant monoclonal antibody in PBS only (BSA and azide free) storage buffer at a concentration of 1 mg/mL, ready for conjugation. Created using Proteintech's proprietary in-house recombinant technology. Recombinant production enables unrivalled batch-to-batch consistency, easy scale-up, and future security of supply.

This conjugation ready format makes antibodies ideal for use in many applications including: ELISAs, multiplex assays requiring matched pairs, mass cytometry, and multiplex imaging applications. Antibody use should be optimized by the end user for each application and assay.

Background Information

AKAP1 (also termed AKAP149) is a human 149 kDa anchoring protein localized in mitochondria and the endoplasmic reticulum/nuclear envelope (ER-NE) network. It binds to type I and II regulatory subunits of protein kinase A and anchors them to the cytoplasmic face of the mitochondrial outer membrane. This protein is speculated to be involved in the cAMP-dependent signal transduction pathway and in directing RNA to a specific cellular compartment.

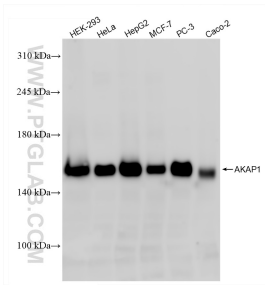
Storage

Storage:
Store at -80°C.
Storage Buffer:
PBS only

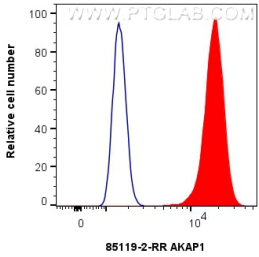
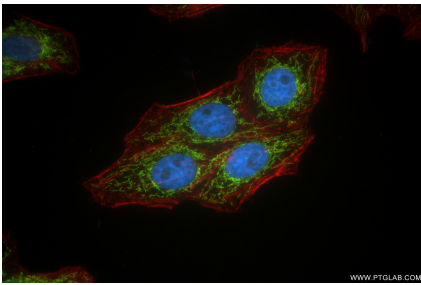
For technical support and original validation data for this product please contact:
T: 1 (888) 4PTGLAB (1-888-478-4522) (toll free in USA), or 1(312) 455-8498 (outside USA)
E: proteintech@ptglab.com
W: ptglab.com

This product is exclusively available under Proteintech Group brand and is not available to purchase from any other manufacturer.

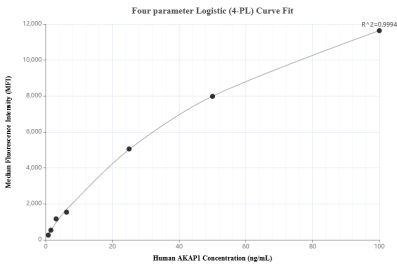
Selected Validation Data



Various lysates were subjected to SDS PAGE followed by western blot with 85119-2-RR (AKAP1 antibody) at dilution of 1:10000 incubated at room temperature for 1.5 hours. This data was developed using the same antibody clone with 85119-2-PBS in a different storage buffer formulation.



1x10⁶ HEK-293T cells were intracellularly stained with 0.13 ug AKAP1 Recombinant antibody (85119-2-RR, Clone:242763A5) and CoraLite®488-Conjugated Goat Anti-Rabbit IgG(H+L) (SA00013-2)(red), or 0.13 ug Rabbit IgG Isotype Control RecAb (98136-1-RR, Clone: 240953C9) (blue). Cells were fixed with 4% PFA and permeabilized with Flow Cytometry Perm Buffer (PF00011-C). This data was developed using the same antibody clone with 85119-2-PBS in a



Cytometric bead array standard curve of MP01840-1, AKAP1 Recombinant Matched Antibody Pair, PBS Only. Capture antibody: 85119-3-PBS. Detection antibody: 85119-2-PBS. Standard: Ag8037. Range: 0.781-100 ng/mL.